

**LOCAL OPERATION INSTRUCTIONS
FOR INTELLIGENT LOCK END**

Contents

I. Product advantages and characteristics	03
II. Product technical parameters	04
III. Checking basic accessories	05
IV. Product size	06
V. Installation step-by-step instructions	06
VI. Adjustment and installation of the lock body	07
VII. Installation of front and rear panels	08
VIII. Adjust the direction of opening the door	09
IX. Door lock panel overview	10
X. Menu structure diagram	11
XI. Network Configuration	15
XII. Software function	16

I. Product advantages and characteristics

Any fingerprint, card, and initial password 123456 can be unlocked without entering the user. After registering the fingerprint or password card, the illegal fingerprint and password card cannot be unlocked; If an administrator has already been registered in the smart lock, adding or deleting users again requires verifying that the administrator has entered the menu settings. If an administrator is not registered, they will not be able to add or delete user functions;

1. Can use fingerprints, passwords, and cards
2. Multiple door opening modes are available to enhance the safety level of door locks
3. The addition and deletion of users are managed based on numbering, which is easy to operate
4. Capable of preventing unauthorized access to passwords
5. Power on self-test, intelligent recognition function module, such as fingerprint+password or swipe card+password, etc
6. All components are made of internationally renowned brand products, with stable and reliable quality
7. The door lock modules have all undergone waterproof, moisture-proof, and mold resistant treatment
8. The door lock modules have undergone tests such as high and low temperatures, vibrations, and aging to adapt to harsh environments



Please read this manual before using the locking device and keep it for future reference.

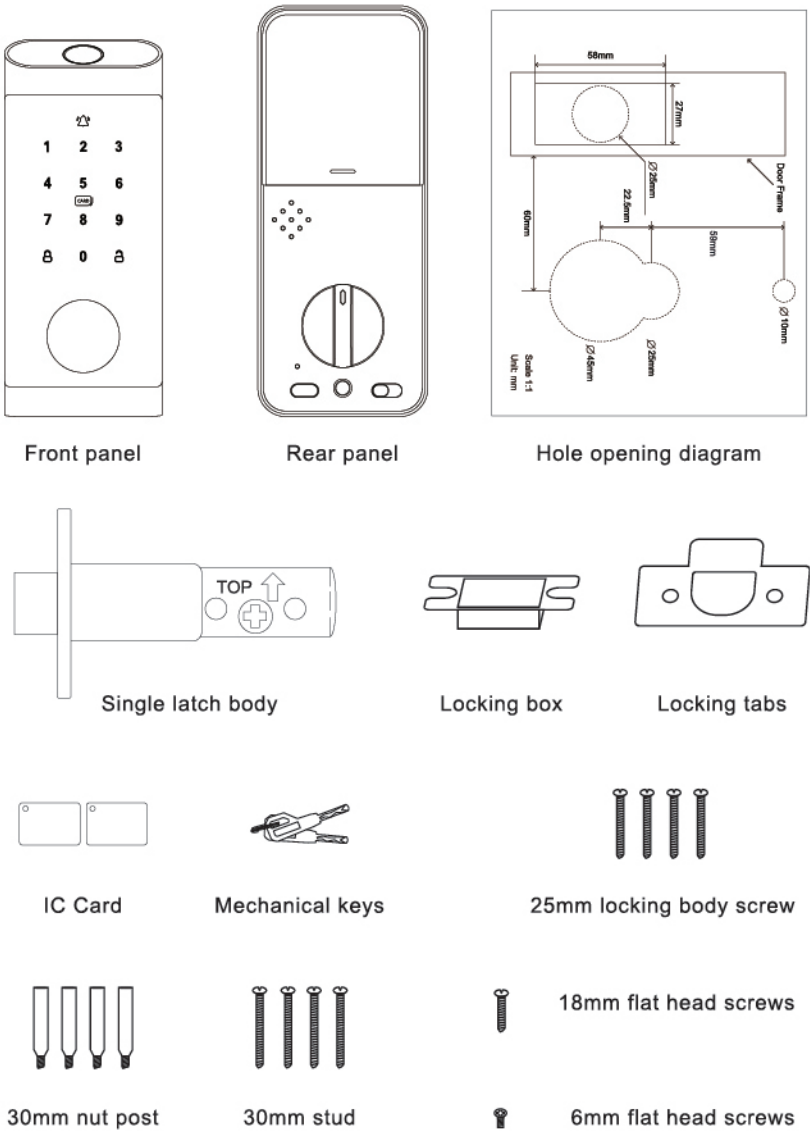
II. Product technical parameters

Function	Content	Elaborate on
Unlocking method	Fingerprint + Password + IC card + Key	
USER	511 bits	001-511 (Fingerprint, password, and magnetic card sharing) Shared between administrators and regular users
Fingerprint	100 pieces	Fingerprints need to be repeated 5 times (please enter from multiple angles)
Password	511 pieces	Password needs to be entered twice with the "⏏" key for confirmation (6-8 digit passwords must be consistent twice)
Magnetic Card	511 pieces	Just enter the card once
Virtual password length	≤16 bits	This product has a virtual anti peeping password: you can enter garbled characters before and after the registered password
Low voltage alarm	4.8V ±0.2V	When the voltage is below 4.8V, the red indicator light will flash rapidly continuously for 5 times. And prompt "low battery level", can continue to unlock. When the voltage is below 4.5V, the red indicator light will flash continuously for 5 times and cannot unlock.
Quiescent current	≤65uA	
Dynamic current	>250mA	
Supply voltage	6V	Voltage when the new battery is fully charged
Emergency power supply	5VDC	USB
Operation temperature	-25℃ ~ 70℃	
Working humidity	45% ~ 90%RH	
Quick lock outside the door	After waking up the keyboard, click on the "⏏" on the panel to immediately lock it	

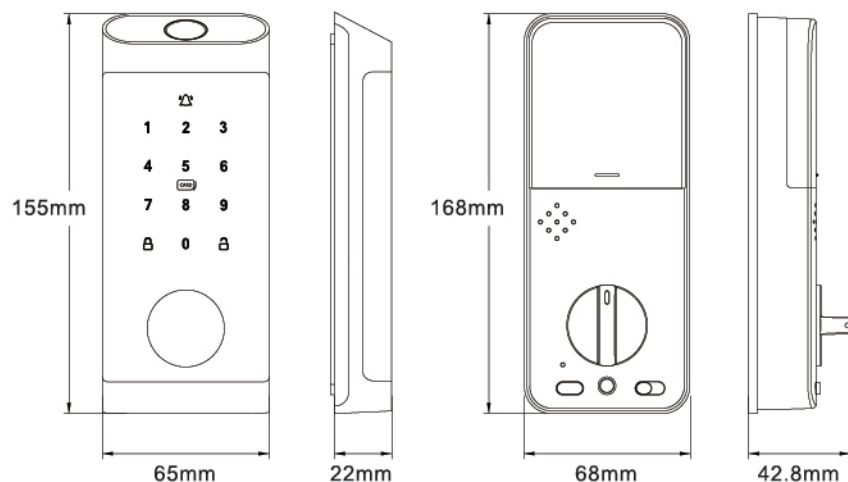
Kind reminder: Please store your mechanical key outdoors for backup!

III. Checking basic accessories

After unpacking the product, check the following accessories.

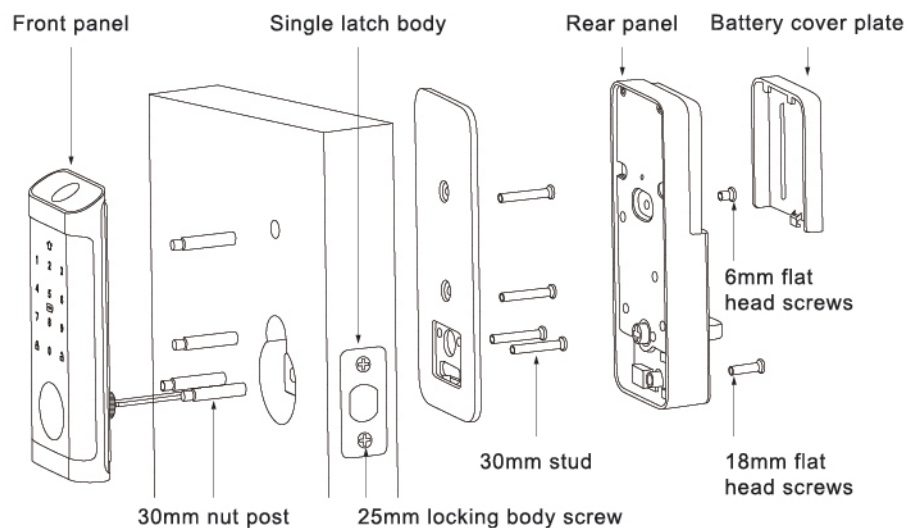


IV. Product size



★ Manual measurement, there is an error, please refer to the actual product size shall prevail.

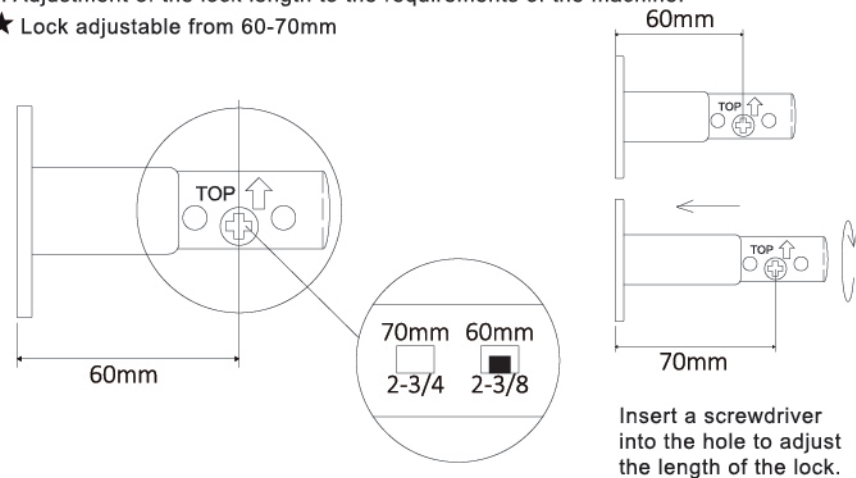
V. Installation step-by-step instructions



VI. Adjustment and installation of the lock body

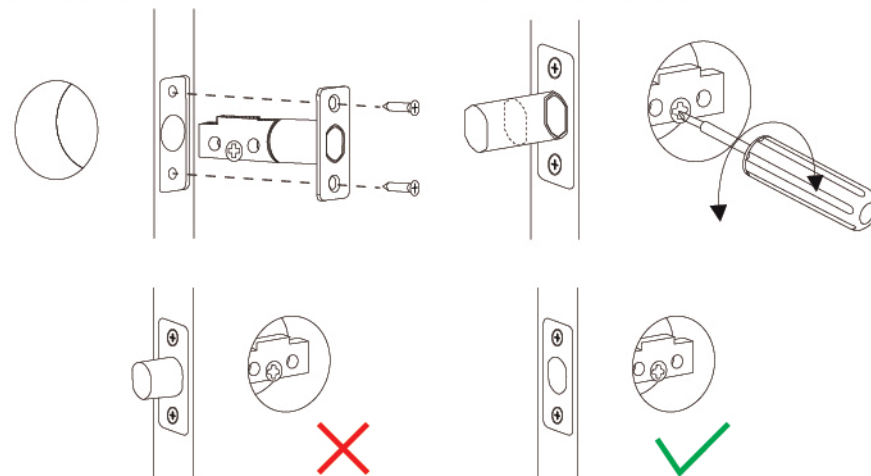
1. Adjustment of the lock length to the requirements of the machine.

★ Lock adjustable from 60-70mm



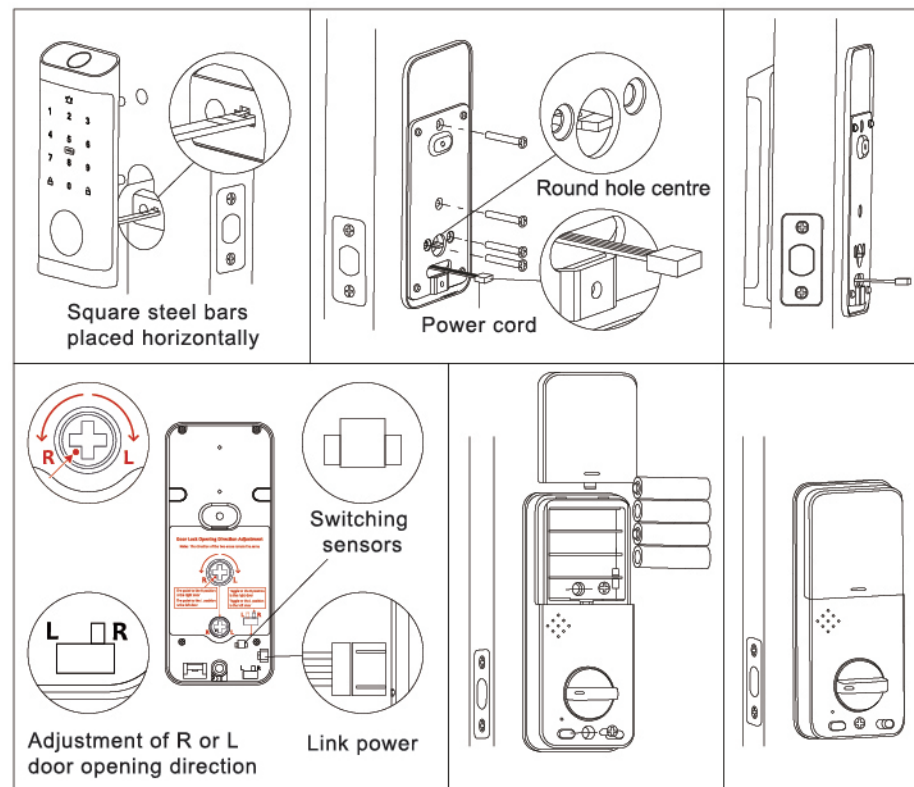
2. Place the lock into the door slot and secure with the lock screw.

3. Test with a screwdriver to ensure the cam retracts smoothly.

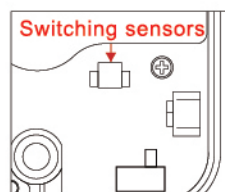


Caution:
The latch must be in the retracted (unlocked) position before the door lock is installed.

VII. Installation of front and rear panels

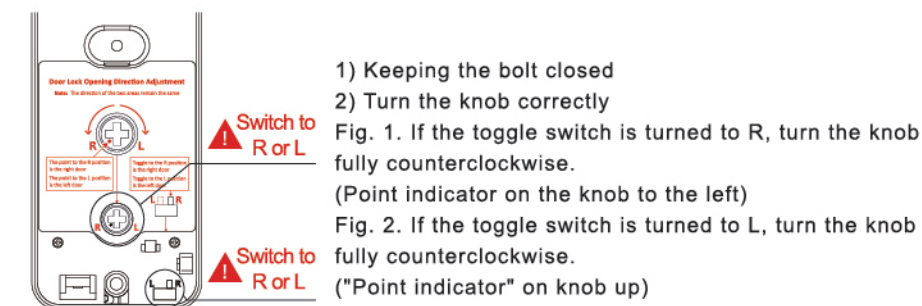
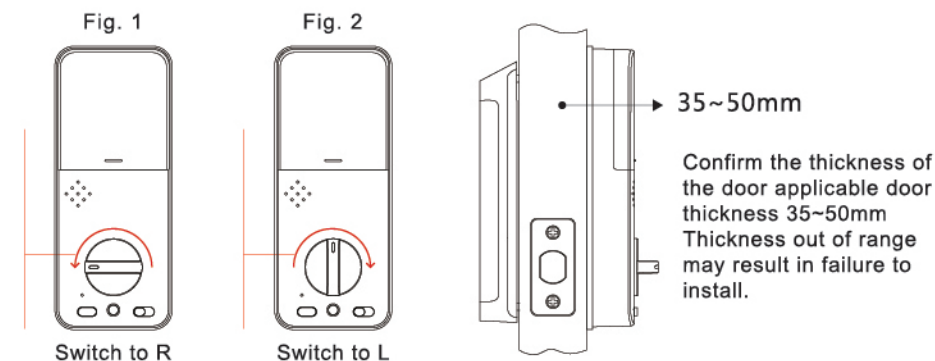
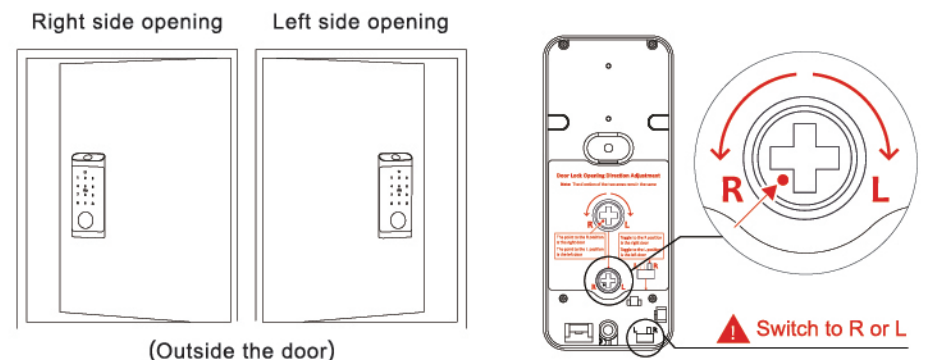


1. Fix the front panel to the door with the power cable through the door hole; the square steel bar through the hole in the lock body.
Note: The square steel bars are placed horizontally as shown.
2. Determine the position of the mounting plate, pass the power cable through the mounting plate and then use the 4 screws to pass the front panel through the mounting plate fixing to the door. (Square steel bar in the centre of the hole)
3. Connect the power supply and select R or L depending on the opening direction (see P9).
Adjusting the opening direction for details) to align the rear panel with the mounting plate.
4. Open the battery cover on the rear panel and secure the rear panel to the mounting plate with three screws.
5. Install four No. 5 batteries and ensure that the batteries are oriented in a positive and negative direction and close the battery cover.
Note: Turn the knob smoothly after installation.
6. Door lock switch sensors can be fitted on request.



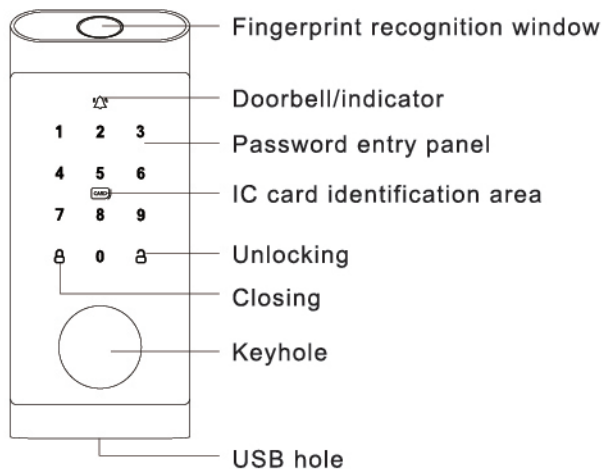
VIII. Adjust the direction of opening the door

Check the opening direction of the door, if the front panel of the door lock is fixed on the left side, turn the toggle button to L, and if it is fixed on the right side, turn to R. Turn the knob according to the direction you open it.
Note: Please check whether the door opens right or left before installing the rear panel and set it to open right or left according to the following instructions.

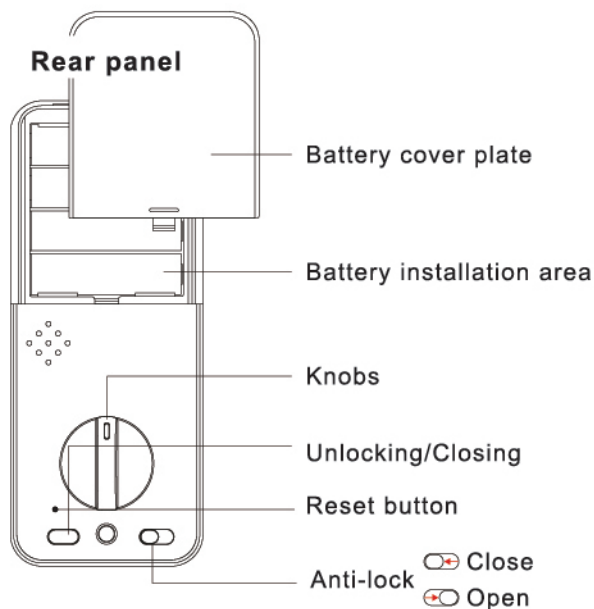


IX. Door lock panel overview

Front panel



Rear panel



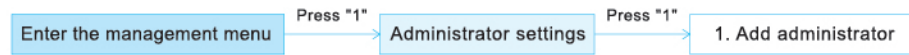
X. Menu structure diagram

After waking up the keyboard, enter the "1 ⌂" key to enter the settings menu. The system displays "Enter administrator information". Enter the management menu. If the administrator information is not registered, you can use any fingerprint or initialization password 123456 + " ⌂ " to enter the management menu.

Enter the management menu		
1. Administrator settings	1. Add administrator	
	2. Delete administrator	
	3. Network configuration	
2. User settings	1. Add users	
	2. Delete user	1 Delete a single user 2 Delete all users
3. System settings	1. Volume settings	1 Low 2 medium 3 High 0 Mute
	2. Unlock mode setting	1 Single unlocking 2 Combination unlocking
	3. Language selection	1 English 2 Portuguese 3 Spanish 4 Chinese
	4. Door opening direction setting	1 Left door open 2 Right door open
	5. Door magnetic switch settings	1 door magnetic open 2 door magnetic close
	6. Automatic locking	1 on 2 off ① 5 seconds ② 10 seconds ③ 15 seconds ④ 30 seconds ⑤ 60 seconds
4. System initialization	Press " ⌂ " to cancel	
	Press " ⌂ " to confirm	

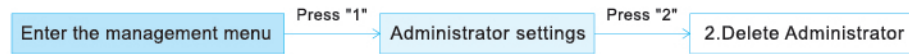
Quick operation		
Quickly switch language	889911 ⌂ switch to English	889912 ⌂ switch to Portuguese
	889913 ⌂ switch to Spanish	889914 ⌂ switch to Chinese
	(Need to be done in initialization state)	
Quickly switch door opening direction	666888 ⌂ quickly switch left/right door opening (Need to be done in initialization state)	
Quickly restore factory settings	After entering "888 ⌂" and verifying administrator information, the factory settings can be restored	

1. Add administrator action



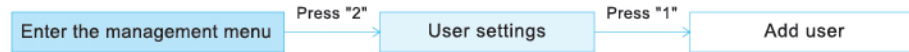
- 1.After entering the configuration operation, enter the fingerprint password or card that needs to be entered, and the system will automatically assign a key number;
- 2.The first set of keys is the administrator password, and the system default sequence number is "001"
- 3.The valid digits of a digital password are 6-8 bits;
- 4.Fingerprint input 5 times continuously, password input 2 times continuously, and card input 1 time;

2. Delete administrator action



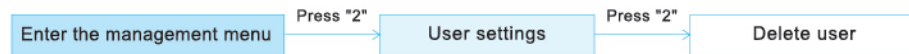
1. Enter the number and press the "⏏" key to confirm, for example: "002"+"⏏"
2. To ensure the normal operation of the system, the administrator for this verification cannot delete it;
3. When the administrator deletes other numbers and enters them again, the system will automatically replace their numbers.

3. Add regular user actions



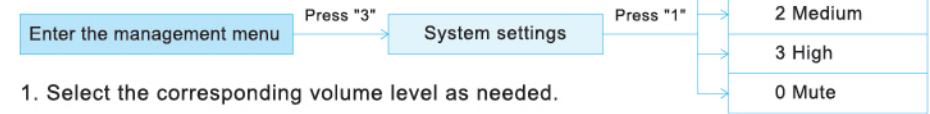
- 1.After entering the configuration operation, enter the fingerprint, password, or card that needs to be entered, and the system will automatically assign a key number;
- 2.The valid digits of a digital password are 6-8 bits;
- 3.Fingerprint input 5 times consecutively, password input 2 times consecutively, and card input 1 time

4. Delete single/all user actions



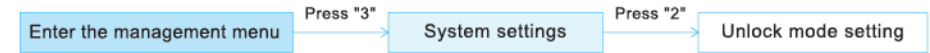
- 1."Delete a single user" refers to deleting the corresponding user key. After entering the number, press the "⏏" key to confirm, for example: "010" + "⏏"
- 2."Delete all users" refers to deleting all user keys without affecting the administrator key;
- 3.The range of user numbers is: 002~511;
- 4.After the user deletes it, the system will automatically replace its number when entering it again.

5. Volume Setting



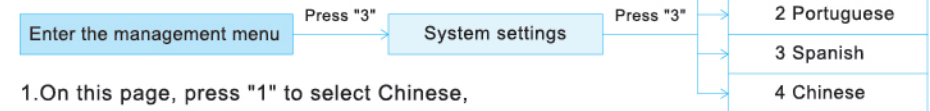
1. Select the corresponding volume level as needed.

6. Unlock mode setting



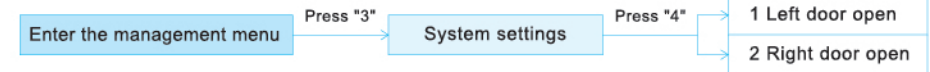
- 1."Single unlock" refers to any type of fingerprint password or card that has been entered and can be unlocked;
- 2."Combination unlocking" refers to the need for two different sets of keys to be verified in order to unlock;
- 3.Administrators are not limited by the double authentication mode when unlocking.

7. Language selection settings



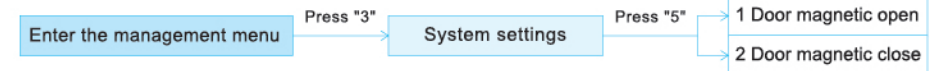
- 1.On this page, press "1" to select Chinese, press "2" to select English;
- 2.After system initialization, Chinese is selected by default.

8. Unlock direction setting



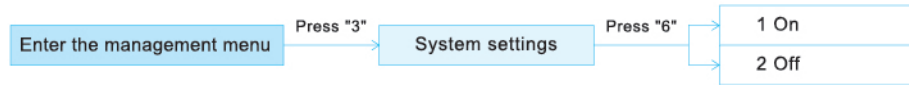
- 1.On this interface, press "1" to select the left door, and press "2" to select the right door;
- 2.After system initialization, the unlocking direction will not be affected.

9. Door magnetic switch settings



- 1.Press "1" on this interface to select to turn on the door magnetic switch.
The door magnetic sensor will automatically lock when the door is closed;
- 2.Press "2" on this interface to select to turn off the door magnetic switch function.

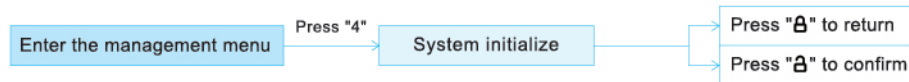
10. Automatic lock setting



1. Press "1" on this interface to select the automatic locking function, and then select the automatic locking time according to the needs;
2. Press "2" on this interface to select to disable the automatic locking function;
3. After activating the automatic locking function, the timer will start after the unlocking is completed. After reaching the predetermined setting time, the locking operation will be automatically performed.

Note: After activating the automatic locking function, you need to select the automatic locking time ① 5 seconds ② 10 seconds ③ 15 seconds ④ 30 seconds ⑤ 60 seconds

11. Restore factory settings



After restoring the factory settings, all data will be cleared, but the language selection and automatic lock function will not be reset and will still operate according to the previous settings.

12. One key switch lock

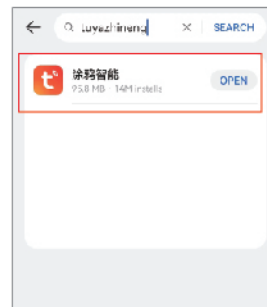
1. Press the "one key switch lock" button on the rear panel to unlock or close the lock;
2. It is possible to unlock or close the lock through a mechanical manual knob.

XI. Network Configuration

★ **Note:** Ordinary stand-alone version does not have graffiti wifi function, wifi connection does not support 5G waylay.

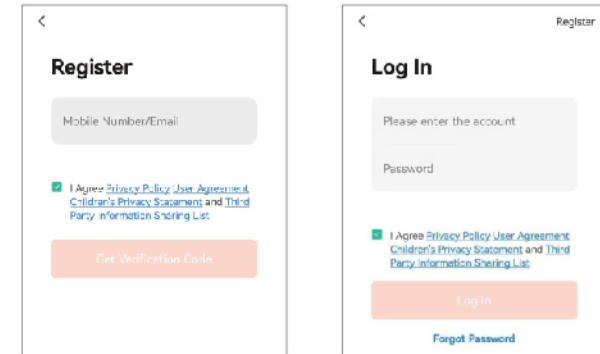
1. A. Network settings

Please search and download the "Tuya Smart" APP in the app store, or scan the QR code to download it, and remind registered users according to the software;



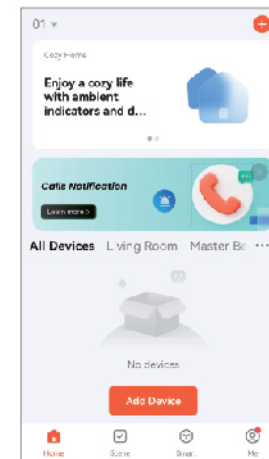
2. APP Registration, Login

Do not have an APP account, choose log in or log in via SMS verification code. Click Create New Account to enter the account registration page. According to the prompts to obtain SMS verification code, set password. If you already have an account, click "Log in with an existing account" to log in to the app. Login support password, verification code, social account login.

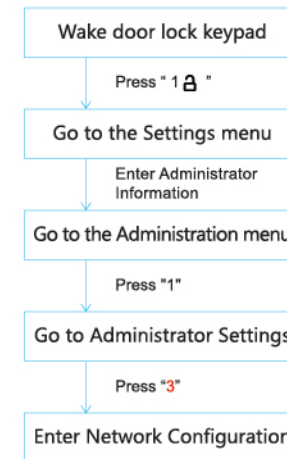


After the lock body enters the network configuration, open the "Tuya Smart" APP to pair the lock body, and enter the WiFi name and password used;

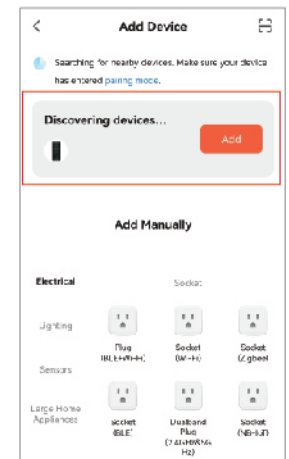
3. Link Network



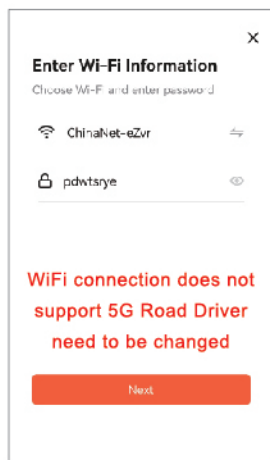
Click on the home page of the app Add Equipment



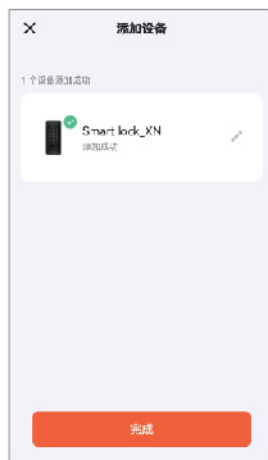
The number "0" flashing on the door lock keyboard



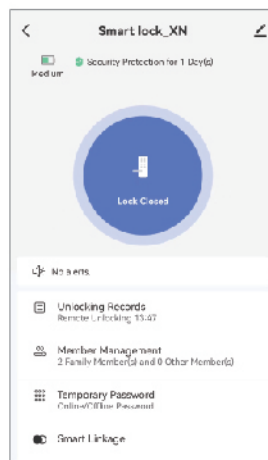
Click Add



Enter the wifi information click next

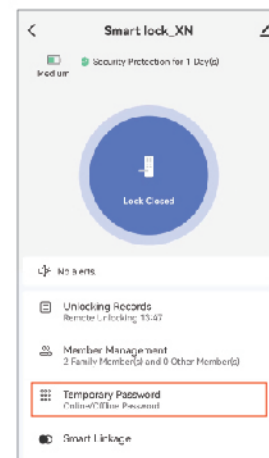


Waiting to be added
Click Done

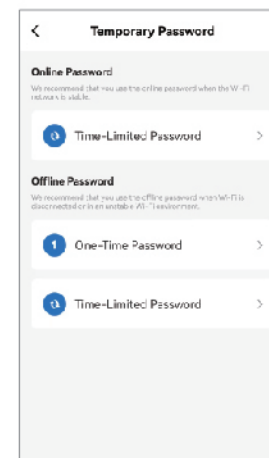


Go to the main device page

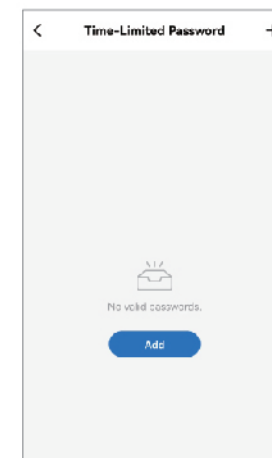
2. Temporary password function



Select a temporary password on the device home page



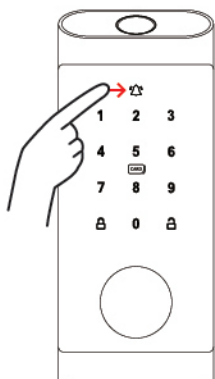
Select the type of password that needs to be set



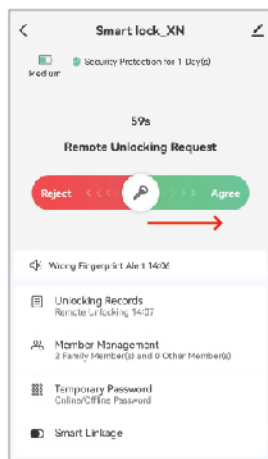
Click Add

XII. Software function

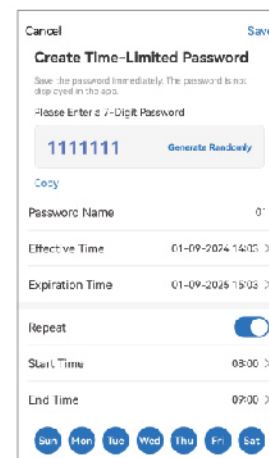
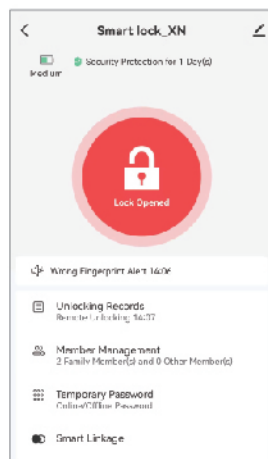
1. Remote unlocking



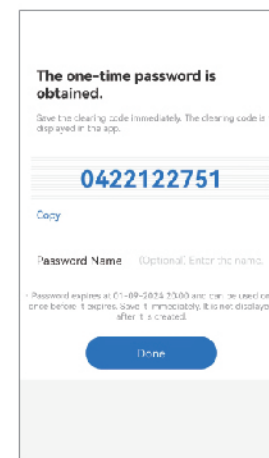
Press the touch doorbell to apply for remote unlock



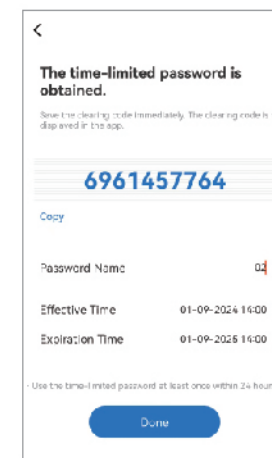
APP Request Remote
Swipe right consent



Online unlimited number of passwords



Offline One-time Password

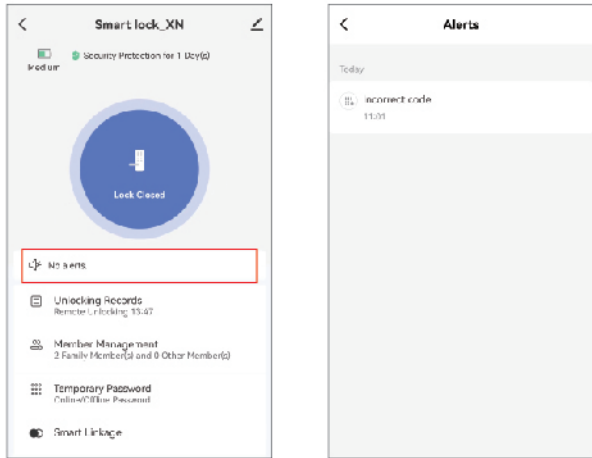


Offline Unlimited Password

Note: One-time password is valid for 6 hours, can only be used once within the validity period; Unlimited password can be set effective time and failure time, valid period does not limit the number of unlocks.

3. Alarm record notification

The system will automatically record the wrong unlocking operation and push it in the software. On the main device screen select Alarm Message



4. Door opening record function

After the connection is successful, the software will record the working record of the door lock, including the unlocking user and operation record. On the main device screen select Unlocking Record.

