

## SMART LOCK INSTRUCTIONS

## Attention to Smart Locks

1. The door lock device is equipped with a mechanical key to open the lock manually, remove the mechanical key from the packaging, and Keep them in a safe place (not in a room with a door lock) and can be found in other places Use it at any time in the case.
2. Open the battery cover plate. 4 sections 5 alkaline battery need to be installed.  
(No rechargeable battery can be used)
3. The door lock sets a standby time limit of 10 seconds when the door lock operates. If no operation is carried out during standby, The door lock will close in 10 seconds.
4. Keep your fingers clean when using the door lock device.

## Language support

Languages: Simplified Chinese, Traditional Chinese, English, Spanish, etc. 23 languages.



Before using this door lock device, please read this manual first and save it for future reference.

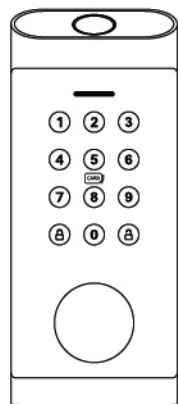
## I. Product parameters

Open the door: APP / fingerprint / password / credit card / key
Product material: Zinc alloy collar
System support: Android 4.3 / IOS 7.0 or above
Bluetooth Standard: Bluetooth 5.0 BLE
Unlocking time: $\approx 1.5S$
Fingerprint Type: Semiconductor Fingerprint Head
Fingerprint capacity: 100pcs
Card Type: Mifare M1 Card
IC Card Capacity: 1000
Password capacity: APP send password - unlimited custom password - 150 groups
Fitting door thickness: 35mm-50mm
Applicable locks: monolingual locks
Working temperature: $-20^{\circ}C \sim 60^{\circ}C$
Working humidity: 20% ~ 80% RH
Operating current: < 200 mA
Quiescent current: < 70 uA
Scheme of electric power supply: 6V ( 4 x AA alkaline dry batteries)
FAR: < 0.001%
FRR: < 1.0%
Low voltage alarm: $\leq 4.8 V$
Product Color: Sub-Light Black Nickel Strip

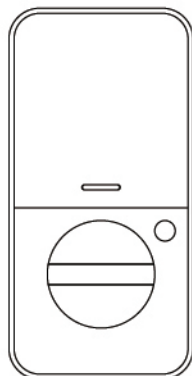
## 2. Inspection of basic accessories

Open the packaging and remove the products and accessories.

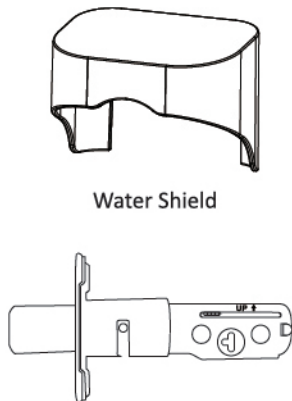
Check that the items are complete



Front Panel

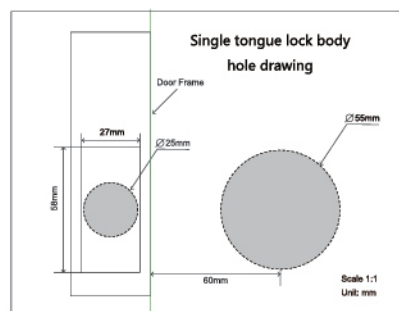


Behind Panels

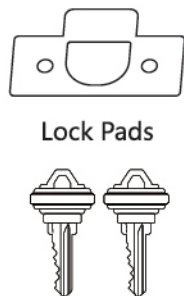


Water Shield

Monotonic Locks



Orifice Diagram



Lock Pads



The Lock Box



Key



Card



40mm Flathead Screw

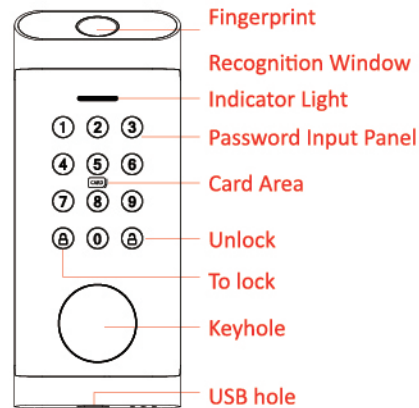


30mm Flathead Screw

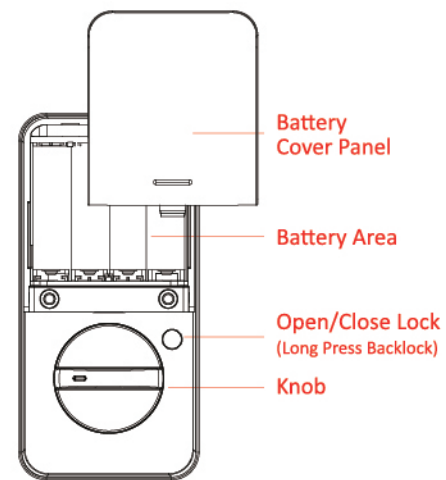


20mm Flathead Screw

## 3. Overview of door lock panels

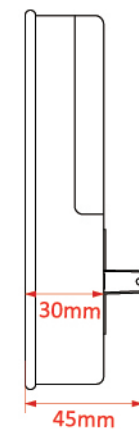
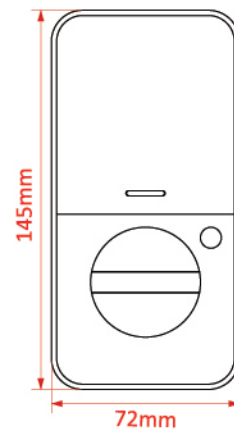
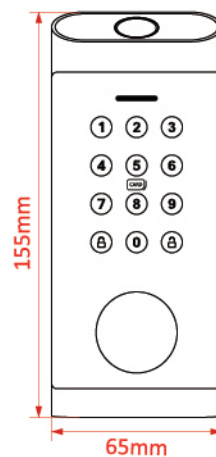


Front Panel



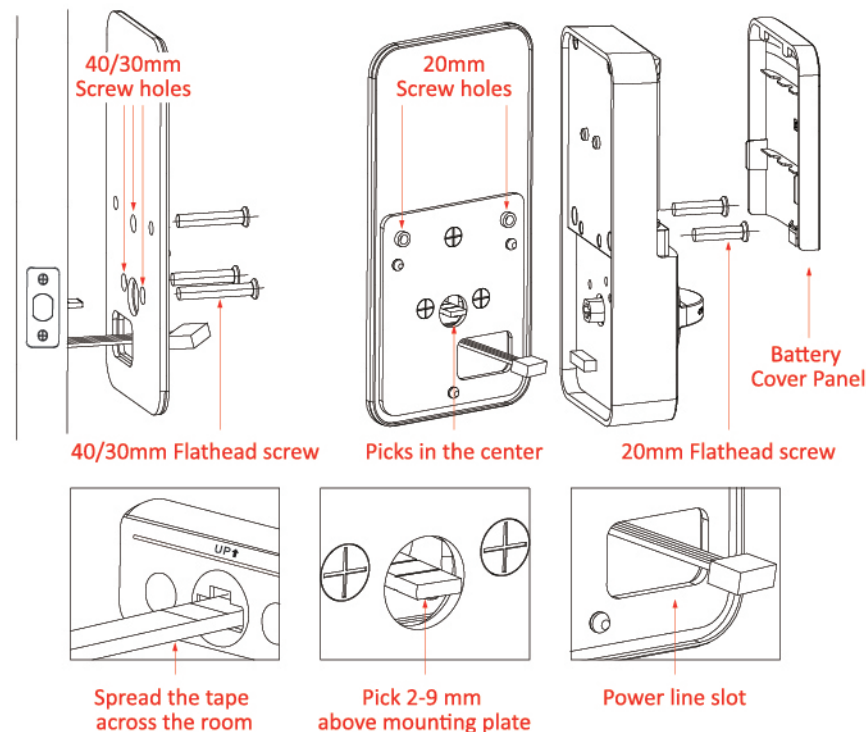
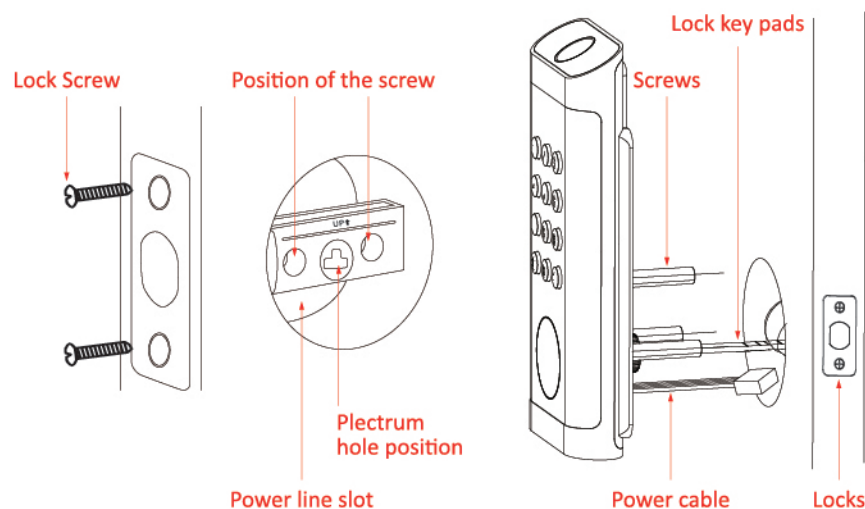
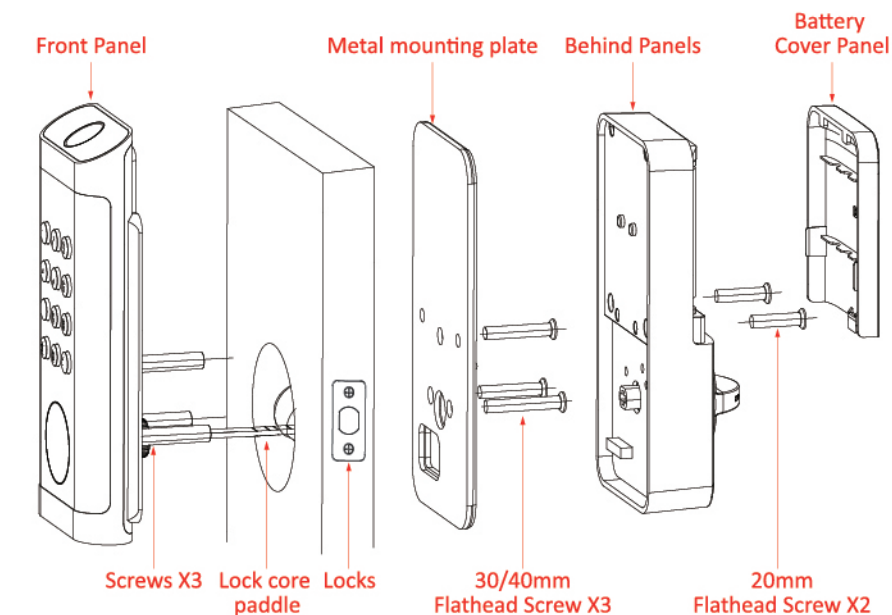
Behind Panels

## 4. Product Dimensions



★ Manual measurements, there are errors, please use actual product dimensions.

## 4. Instructions for installation steps



### Install a lock

Place the lock in the corresponding slot and secure the lock with a screw.

Note: The orientation of the sliced hole is shown in the diagram

### Install the front panel

The lock core diaphragm is placed horizontally through the diaphragmic hole on the lock and against the screw hole on the locks. The power line passes through the door frame and puts the front panel on the door. (Pick in the center of the hole, lock core pick length according to the actual door thickness with pointed nose pliers to cut the appropriate length, pick higher than the installation plate 2-9mm)

### Metal mounting plate after fixing

Determine the position of the metal installation plate and pass the power line through the hole below the installation plate. Align the holes in the stud and the mounting plate and secure the mounting plate to the door with 40 / 30 mm flat head screws.

### Install the back panel

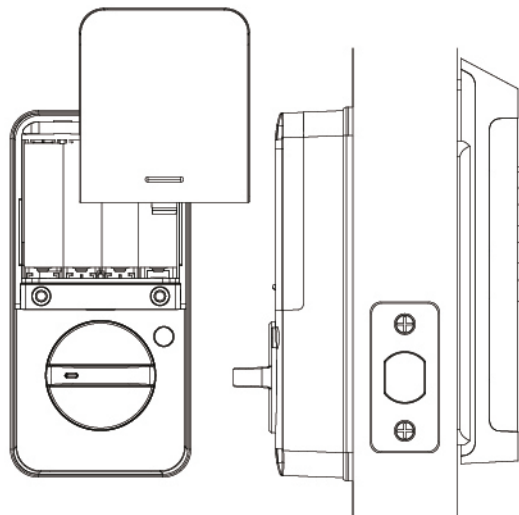
Connect the power line to the rear panel port, open the battery cover, align the rear panel with the mounting plate, and secure it with 20mm flat head screws.

## Install batteries

Install 4 sections 5 of the battery, test the power supply and unlock condition, and cover the battery cover.

## Note:

The positive and negative electrodes of the battery are installed correctly, and the rotation knob should be smooth after completion.



## 6. The app explains.

### APP application download

The iOS version of the software can be downloaded from the App Store and the Android version from google play, App Store, Baidu, Ali, 360, Huawei, Xiaomi and other app markets.



1. Scan the QR code on your mobile phone to download the Tong Tong Lock App
2. Search for "Tong Tong Lock" in the application market to install and download.

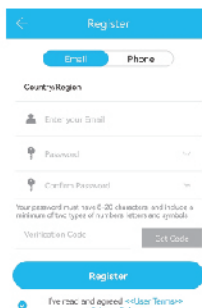
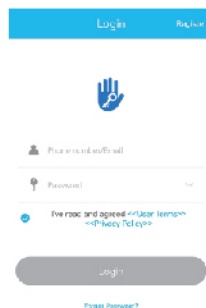
## User registration and login

### User registration:

On the login page, click on "Register" in the top right corner and enter your mobile phone number or email address, set your password and click Register.

### User Login:

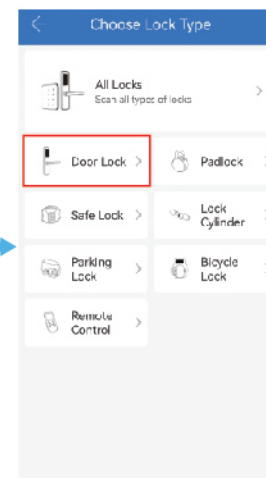
On the login page, enter your account and password and click "Login".



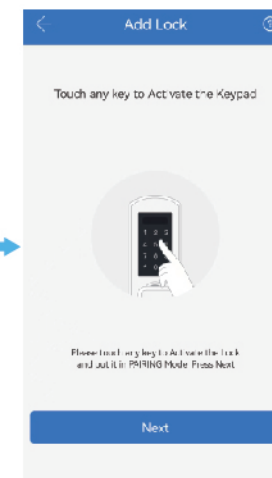
## Add a door lock device



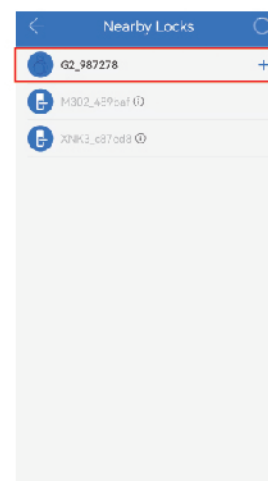
Click + Add Lock



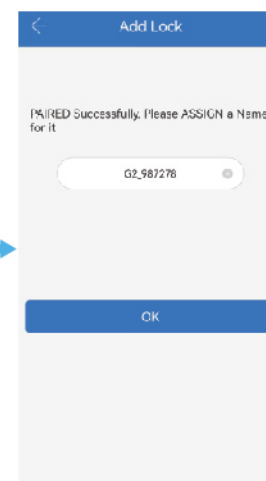
Select the door lock



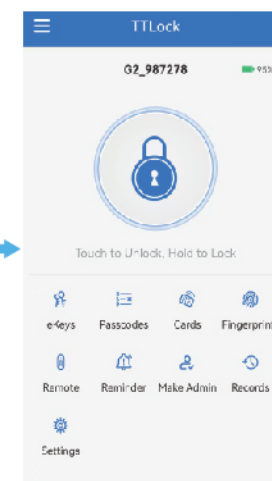
Touch a device to wake up



Select the connection above the door lock device

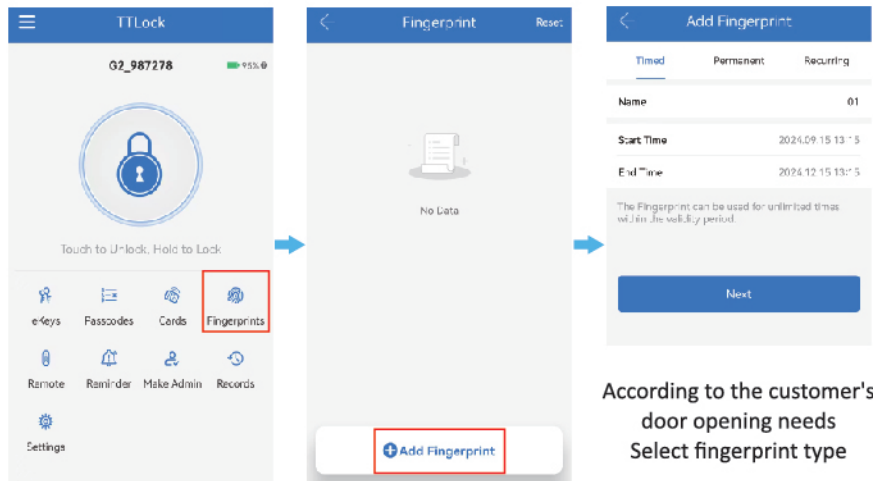


After the device is named click OK



Go to the main page

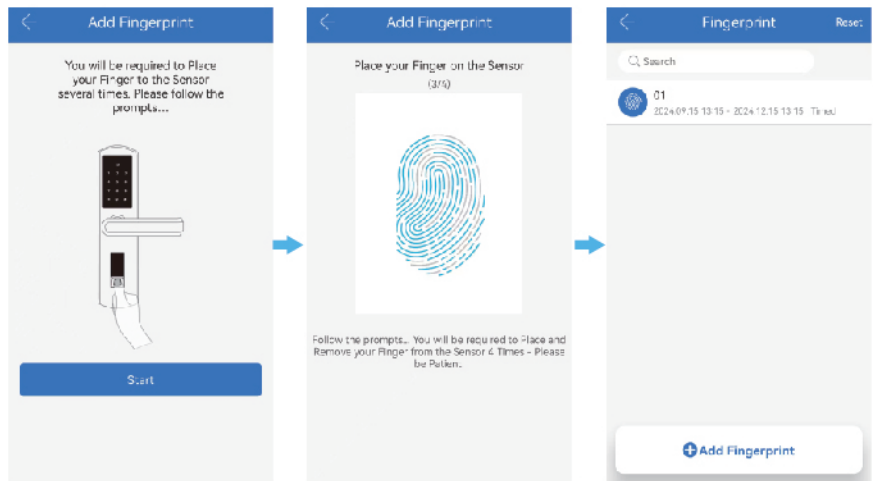
设置指纹解锁



Select on the main page Fingerprints

Click Add Fingerprint

According to the customer's door opening needs  
Select fingerprint type

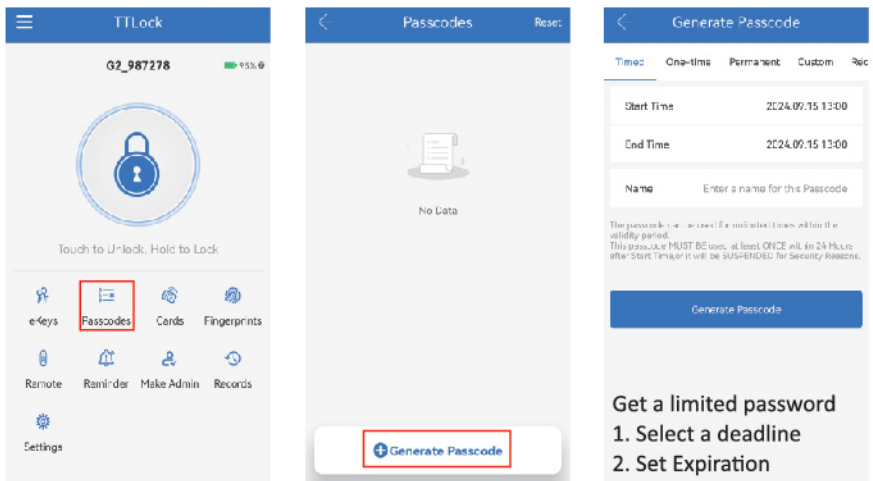


Bring your phone close to the door lock device click Start

Follow the prompts to collect fingerprints

Fingerprint collection completed

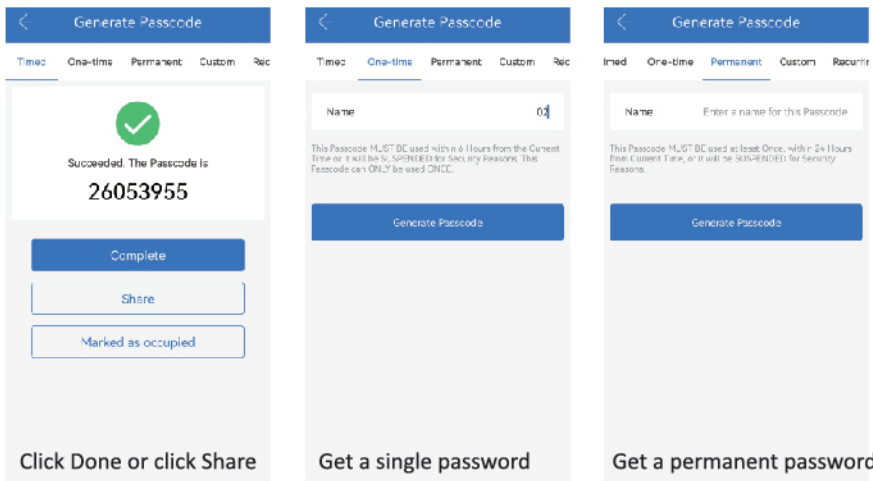
Set Password To Unlock



Select your password on the home page

Click to get your password

Get a limited password  
1. Select a deadline  
2. Set Expiration / Expiration Time  
3. Name the password  
4. Click to set password



Click Done or click Share to send the password

Get a single password  
1. Select a single time  
2. Name the password  
3. Click to set password

Get a permanent password  
1. Choose permanent  
2. Name the password  
3. Click to set password



#### Get custom passwords

1. Select Customization
2. Set Expiration / Expiration Time or Open Permanent
3. Name the password
4. Set a 6-digit password
5. Click to set password

#### Get a loop password

1. Selection cycle
2. Set the cycle mode
3. Set Expiration / Expiration Time
4. Name the password
5. Click to set password

#### Empty the password

Click on Get Password, enter the password on the lock device, and immediately empty all passwords

(When adding, the card needs to be close to the card reading area of the lock)

#### Set to add IC card

1. Select on the main page Cards
2. Click Add Card
3. Choose Permanent or time
4. Name the password
5. Set the effective expiration time
6. Click OK

#### Send an electronic key

1. Select on the main page eKey
2. Select the type of password to share
3. Choose who to send
4. Click Send

**Timed :** The validity period can be set, the shortest is 1 hour and the longest is 3 years. If the validity period is less than one year the time is accurate to the hour; if the validity period exceeds one year, the time is accurate to the month. The password must be used within 24 hours after it takes effect, otherwise it will automatically expire.

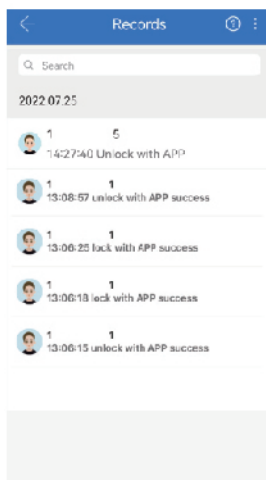
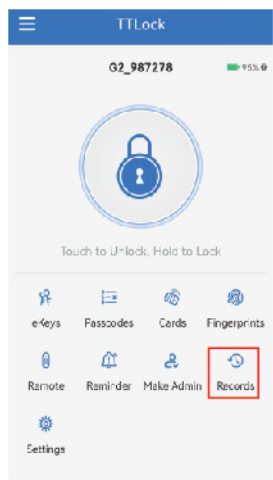
**Permanent:** Set a password that will always be used from now on. The password must be used within 24 hours after it takes effect, otherwise it will automatically expire.

**One-time :** Can only be used once and is valid for 1 hour.

**Recurring :** It can be used repeatedly within the specified time interval, and types such as daily cycle, weekday cycle and weekend cycle can be set.

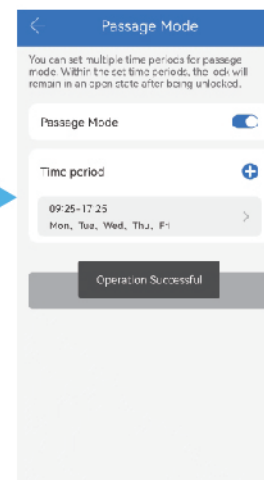
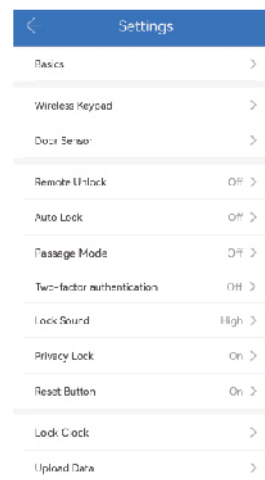
#### Add a remote

1. Select on the main page Remote
2. Click to add remote
3. Select remote control type Select Permanent, Timed, Recurring
4. Name the remote and click Next
5. When the light flashes, click Next
6. Linking device
7. Add finished



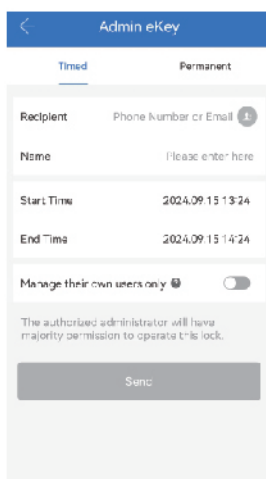
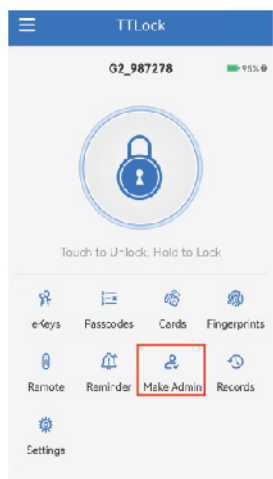
## Open door record query

Select on the main page Records It is also possible to search the door opening records of a single user.



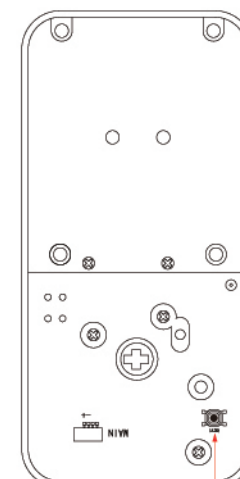
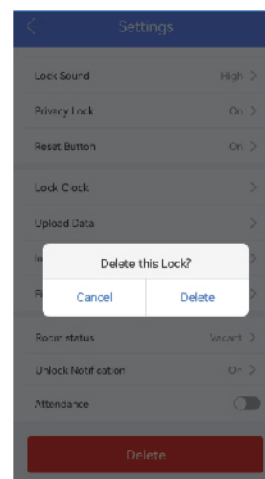
## Passage Mode

1. Select on the main page Settings
2. Choose Passage Mode
3. Open Pasecord quer
4. Set opening hours
5. Click Save



## Authorized Admin

1. Select on the main page Authorized Admin
2. Click Add Authorized Administrator
3. Select administrator type Timed, Permanent
4. Fill in the account number and name of the other party
5. Set Start Time or End Time
6. Click Send



## Restore Factory Settings

- Method 1:
- On the device's home page, click on Settings and select Delete at the bottom of the Settings panel. Click OK to restore factory settings.
- Method 2:
- Under power, press the rear panel settings button for 3 to 5 seconds to hear a prompt, enter the "000 #" and restore factory settings successfully.

Restore factory setting button