

## SMART LOCK INSTRUCTIONS

## Operating Manual

- Thank you for purchasing this product.
- Please read this manual carefully before use.
- Please keep this manual for future reference.
- This instruction manual is subject to change without notice.
- The company does not assume the accident and harm caused by user's wrong operation

### Note :

- When leaving the factory, all users are blank and can be verified by the administrator or unlocked with "123456".
- After waking up the interface, enter "\*" #" to enter the administrator menu.
- First administrator, please use password as administrator information.
- The " \* " key indicates return, and the "#" key indicates confirmation.
- Kind reminder: Please store your mechanical key outdoors for backup!

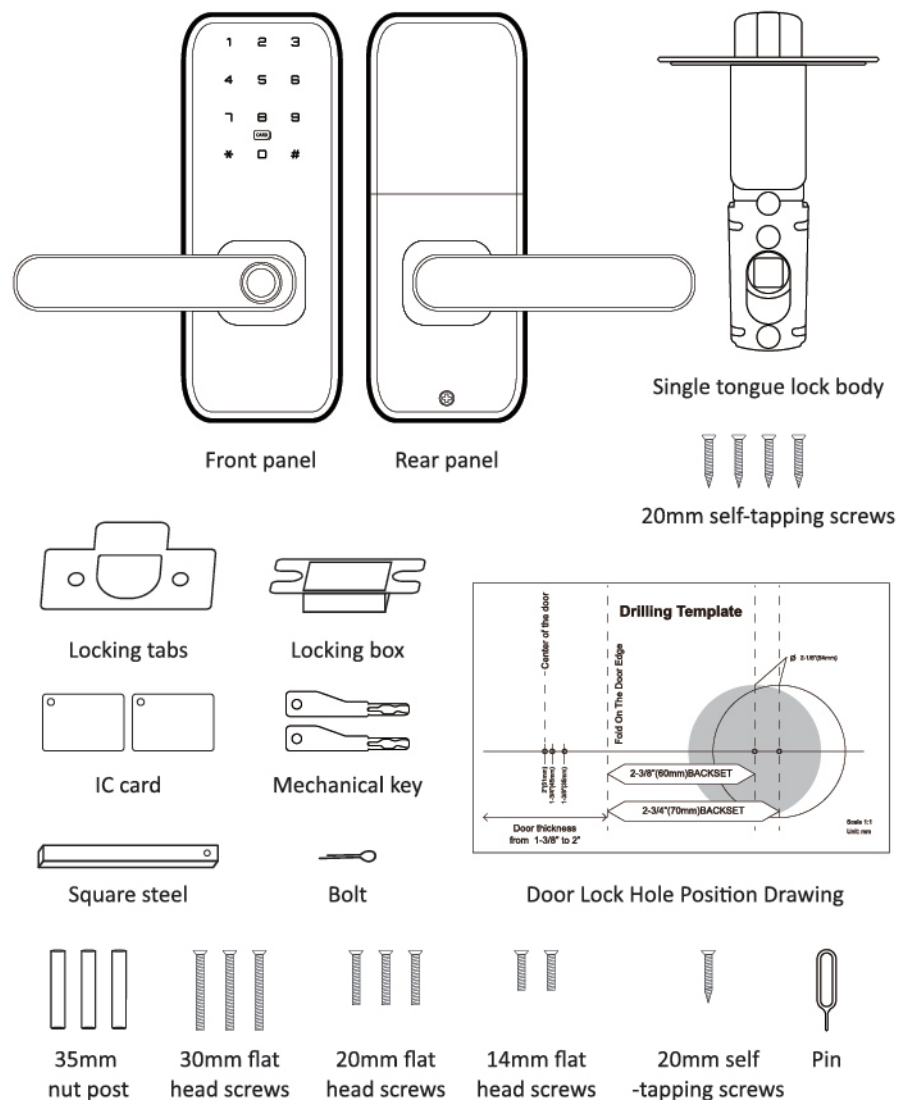
## 1. Product parameters

Number of users:	Number of fingerprint storage: 100 PIN + IC Card Number of Storage: 100
Quiescent Current:	≤65uA
Dynamic Current:	<250mA
Working Voltage:	6.5V When unlocking below 4.8V, a low voltage reminder will be broadcast. Please pay attention to replacing the battery;
External Power Supply:	5V USB
Opening method:	APP, fingerprint, password, IC card, key
Normal Open Mode:	After unlocking using administrator information successfully unlocking, press and hold the "5# " key to enter the normally open mode
Operation Temperature:	-25℃~60℃
Working Humidity:	20%-80%RH
Number Of Password Digits:	6~10bits
Virtual Password:	Virtual password+total length of 22 characters
System Lock:	The system automatically locks after 5 failed unlocking attempts Unlock after 3 minutes of automatic locking
Fakeadmission Rate:	≤0.00004%
Authenticity:	≤0.015%

Tips: Please store your mechanical key outdoors for backup!

## 2. Inspection of Basic Fittings

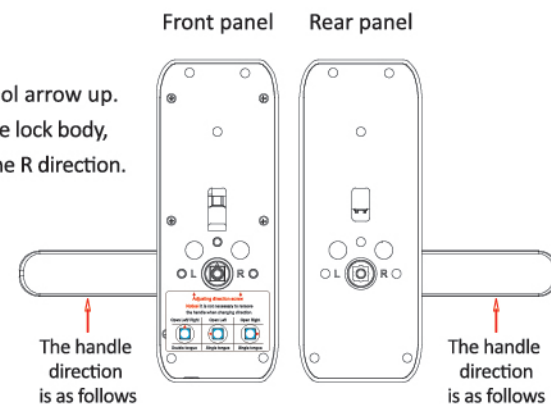
Open the package and take out the products and accessories, check whether the items are complete.



## 3. Door handle reversing left and right

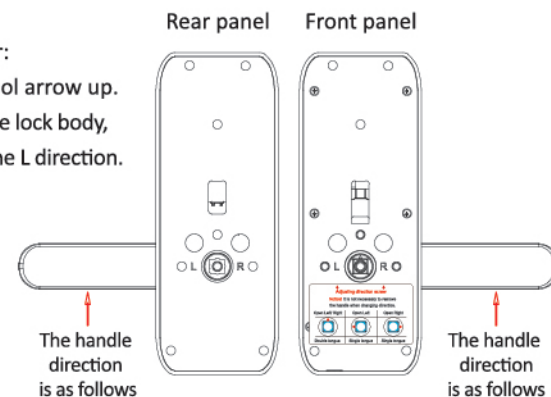
Right door replacement direction:

With double tongue triangle symbol arrow up.  
When equipped with a single tongue lock body, the triangle symbol is mounted in the R direction.



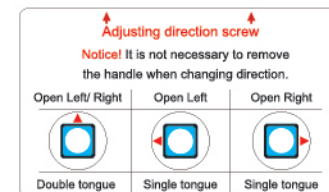
Change direction of left open door:

With double tongue triangle symbol arrow up.  
When equipped with a single tongue lock body, the triangle symbol is mounted in the L direction.

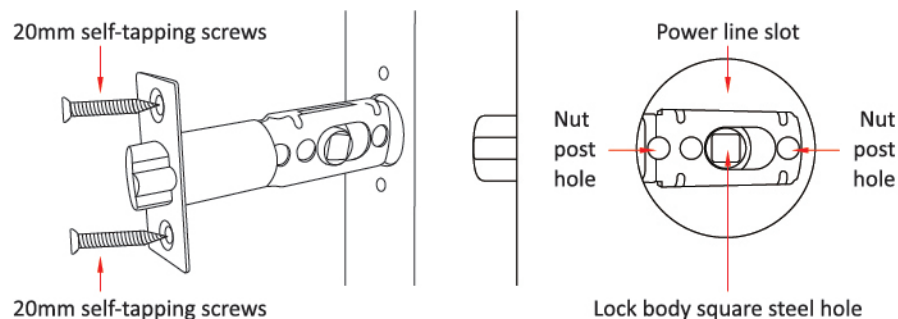


Note: When changing the left and right door handles on the front and back panels, press down the handle about 15°, remove the adjustment screw in the panel with a phillips screwdriver, and install it in another hole.

Screw hole for adjusting direction

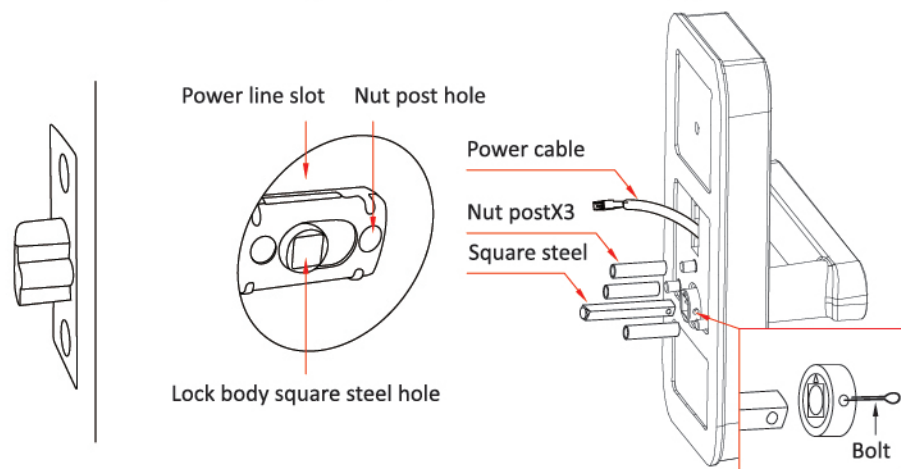


## 4. Installation Steps



### Installing lock body

Put the lock body into the corresponding door slot and fix the lock body up and down with screws.

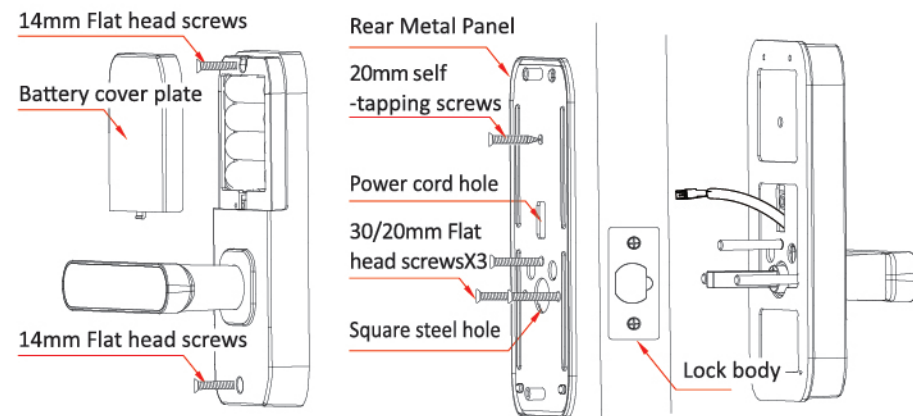


### Installing the front panel

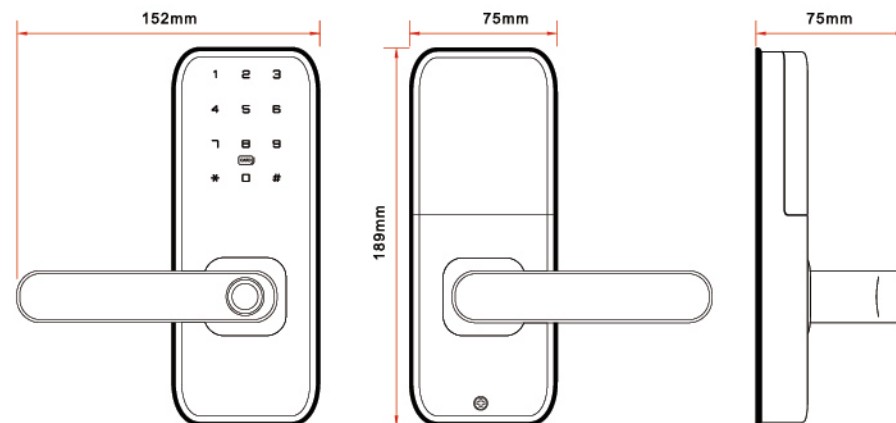
1. Use the bolt to pass through the square steel hole to clamp the latch and fix the square steel on the hole.
2. Screw down the front panel with 3 nut post. To use the double tongue lock body just screw the 2 nut post columns.
3. Turn the clutch to the corresponding position.
4. Insert the power cord from the front panel through the door hole and insert the nut post and square steel into the lock body.
5. Install the silicone pad on the rear metal panel (iron plate), install the 30/20mm flat head screws to the nut post of the front panel and tighten it.

## Installing the rear panel

1. Connect the front and rear panel power cable, and put the surplus power cable into the door frame holes.
2. Remove the battery cover plate, the square steel pore of the rear handle is directed to the square steel on the door, and two 14mm flat head screws are installed.
3. Install the four AA batteries and close the battery cover plate.
4. Test door lock electrification, installation completed.



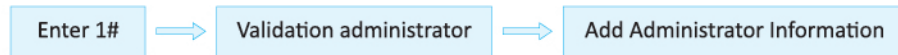
## 5. Product



★ Manual measurement, there is error, please refer to the actual product size.

## 6. User Management

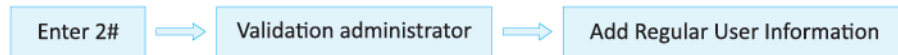
### 1. Add administrator function



Note:

When an administrator is not registered, "123456" can be used for administrator validation; Administrator information registration can be done using passwords, fingerprints, and cards.

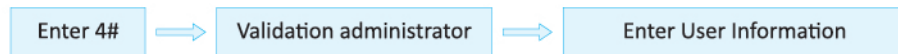
### 2. Add regular user functions



Note:

Please add an administrator in advance before adding regular users; Regular user information registration can be done using passwords, fingerprints, and cards.

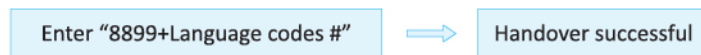
### 3. Delete user function



Note:

To ensure the normal operation of the system, the verified administrator user cannot be deleted; After entering the deletion mode, enter the user information that needs to be deleted, press the # key to confirm, and if successful, the message "Operation successful" will be displayed.

### 4. Language switching function



Note:

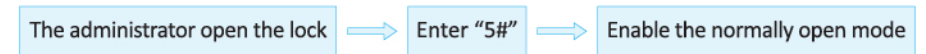
This function must be operated in initialization mode. Language codes:

11:English 12:Portuguese 13:Spanish 14:Russian

15:Arabic 16:Indonesian 17:Vietnamese 18:Chinese 19:Thai.

Example:Switch to English. In initialization mode, enter "889911#" to switch to English.

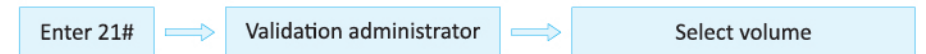
## 5. Normal Open Mode



Note:

This function is only available to administrators. After unlocking using administrator information, the keyboard 5 and # keys light up. After entering 5 #, the normally open mode can be opened.

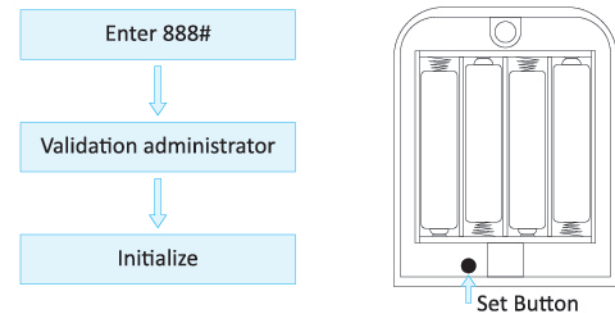
## 6. Volume Setting



Note:

When an administrator is not registered, "123456" can be used for administrator verification; When entering the function menu, the 0, 1, 2, and 3 keys will be illuminated, and the volume can be changed by selecting the corresponding button; 3:High volume, 2:Medium volume, 1:Low volume, 0:Mute.

## 7. Restore factory settings



Note:

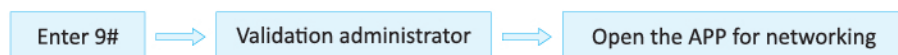
Enter "888 #" to verify that the administrator is successful, and initialization will be carried out immediately;

You can also enter forced initialization mode by long pressing the initialization button on the back panel for 6 seconds;

After initialization, all user information stored within the system will be eliminated, and the system will enter an initialization state.

7. networking function (need to be equipped with Wifi module to achieve)

★ **Note:** Ordinary stand-alone version does not have graffiti wifi function, wifi connection does not support 5G waylay.



## A. Networking settings

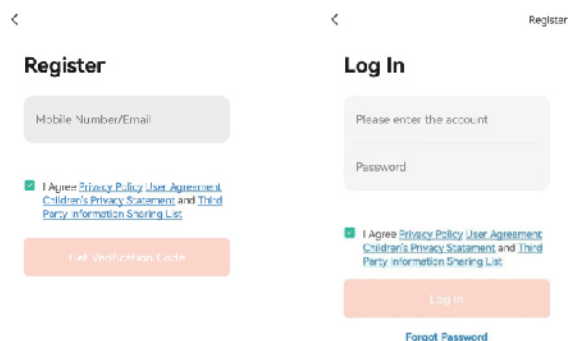
Please search and download the “Tuya Smart” APP in the app store, or scan the QR code to download it, and remind registered users according to the software;



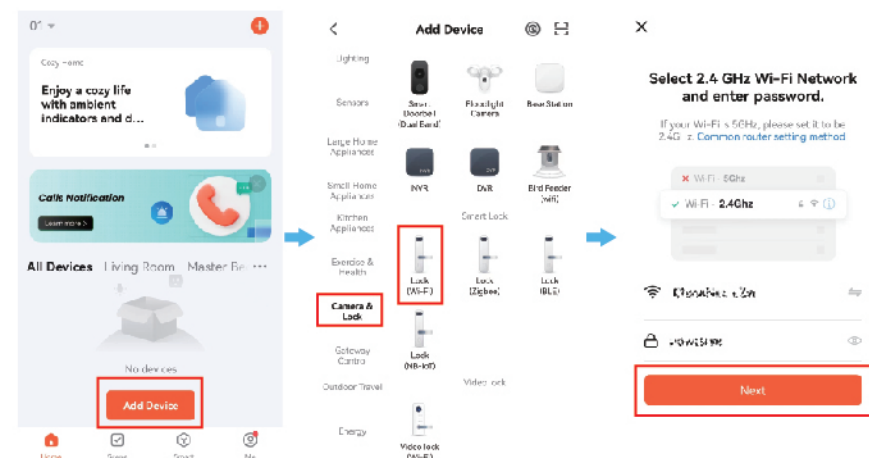
## APP Registration, Login

Do not have an APP account, choose log in or log in via SMS verification code. Click Create New Account to enter the account registration page. According to the prompts to obtain SMS verification code, set password. If you already have an account, click "Log in with an existing account" to log in to the app. Login support password, verification code, social account login.

After the lock body enters the network configuration, open the “Tuya Smart” APP to pair the lock body, and enter the WiFi name and password used;



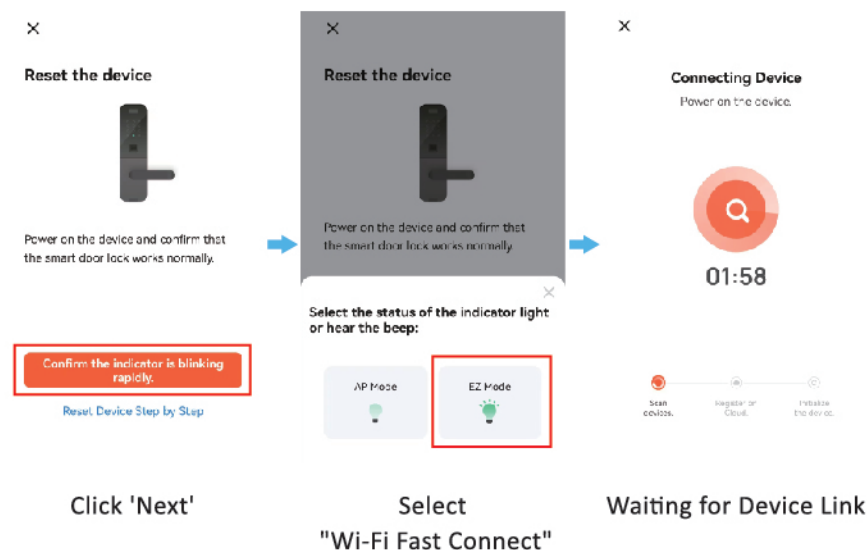
## Add Equipment



Click on 'Add Device' on the homepage of the app

Find Camera / Lock Select Door Lock (Wi-Fi)

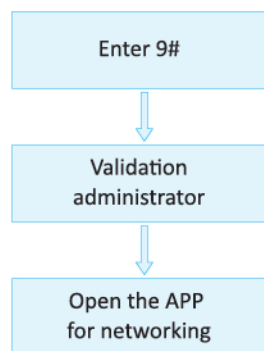
Enter your WiFi account password and click 'Next'



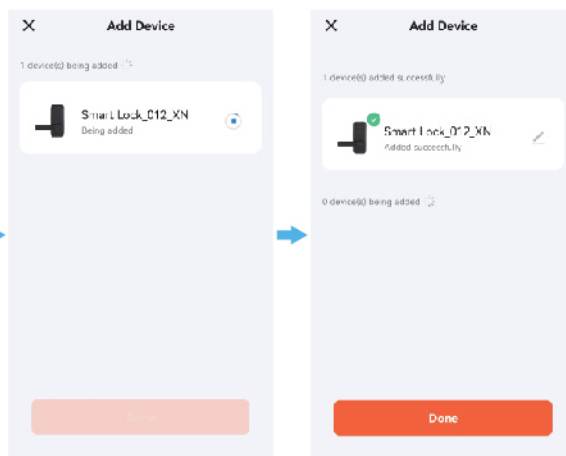
Click 'Next'

Select "Wi-Fi Fast Connect"

Waiting for Device Link



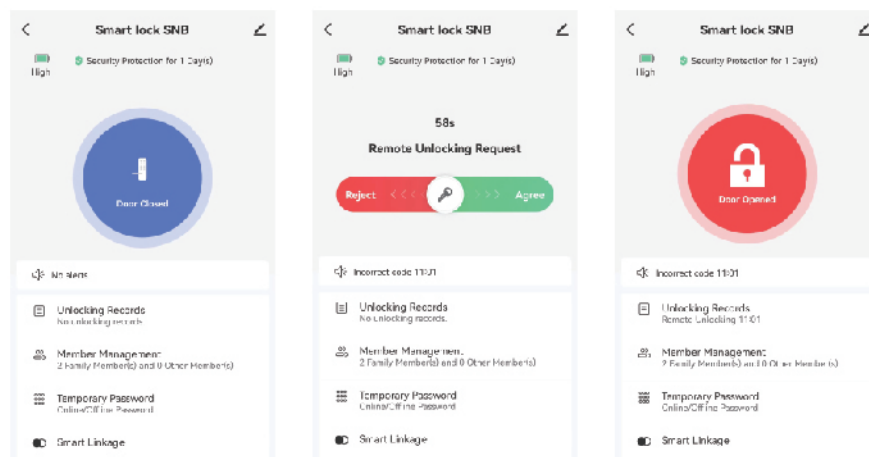
Wake up the door lock panel according to the steps



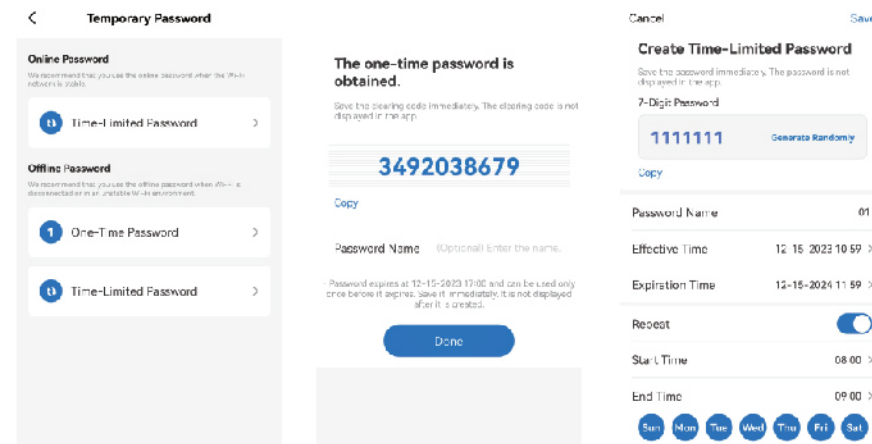
Click 'Done' on Add Success

## B. Software function

1. Remote unlocking : Wake up the door lock, click the door bellkey, you can apply for remote unlocking, through the software confirmation, you can complete the unlocking operation;



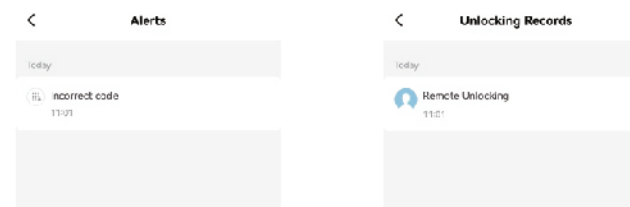
2. Temporary password function: one-time password and unlimited number of passwords can be added;



Note: The one-time password is valid for 6 hours and can only be used once within the validity period; Time-Limited password Validity time and expiration time can be set. The number of unlocking times is not limited during the validity period;

3. Door opening record function: After the connection is successful, the software will record the work record of the door lock, including the user and operation record of the unlock;

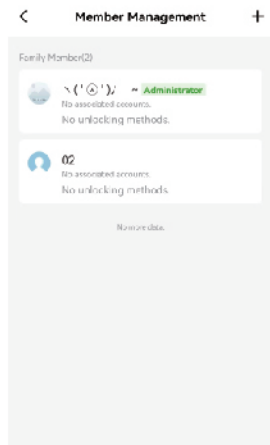
4. Alarm record notification: The system automatically records the incorrect unlocking operation and pushes it to the software;



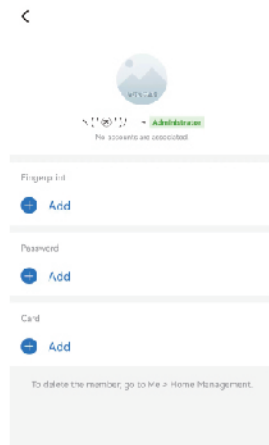
Alarm record

Open Door Record

5. User management function: Users can be added on the software. Click the corresponding user on the user management page to add fingerprints, passwords and cards.

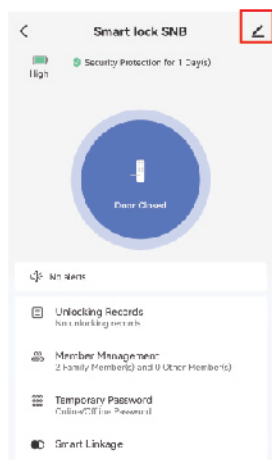


User management

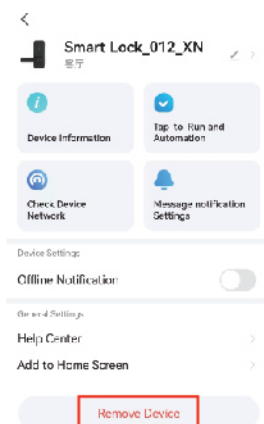


Add Unlock Method

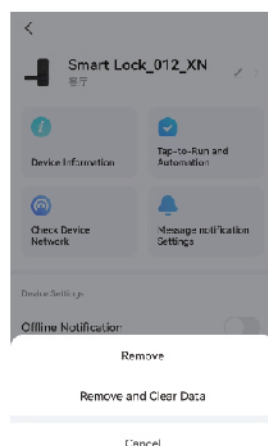
## 6. Removal of equipment



Choice on the top right corner



Choice Remove Device



Choice Remove and Clear Data