

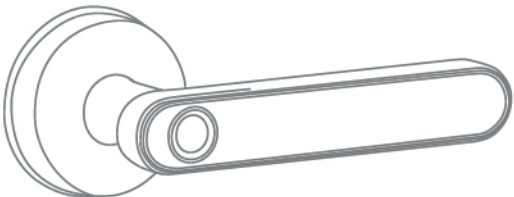
Indoor Smart Lock Instructions

CATALOGUE

1. Check Foundation Accessories	02
2. Installation Step Diagram	03
3. TT-Lock User Manual	05
Product Parameters	05
APP Application Download	06
User Registration and Login	06
Add Door Lock Device	07
Set Up Fingerprint Unlock	08
Set Password To Unlock	09
Set to add IC card	11
Other Functions	11
Passage Mode	13
Restore Factory Settings	14
How to Verify	14

1. Check Foundation Accessories

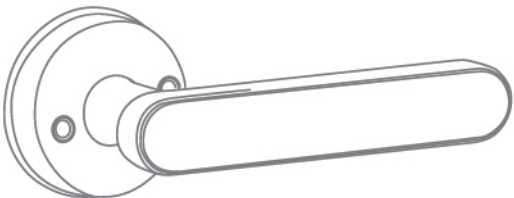
After unpacking the product, check the following accessories .



Front Handle x1



Key X2



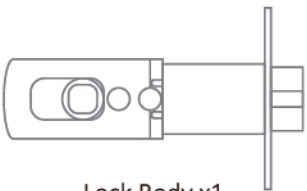
Rear Handle x1



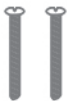
Lock Screw X2



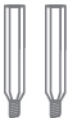
Batteries X4
(Not included)



Lock Body x1



Long Screw X2



Stud X2



Latch Piece x1



Hexagon Wrench X1



Pin X1

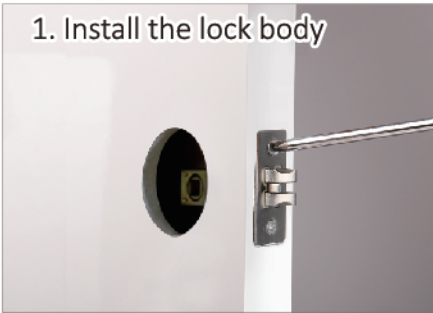


Latch Cover X1



Hollow Square Steel X1

2. Installation Step Diagram



Put the lock body into the corresponding slot and fix the upper and lower screws.



Put the power cord on the front handle through the square steel bar.



The square steel passes through the square steel hole of the lock body, secure the handle.



Secure the two nut posts to the front handle.



Note: Square steel needs to be placed at the bottom.



Loosen the screws of the rear cover plate with a hexagon wrench and remove the rear cover plate.



Put one end of the power cord through the center hole of the rear handle.



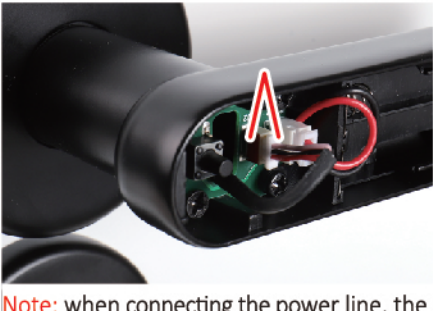
Plug in the power cord and install the battery.



Fasten the rear cover plate and fix the screws of the rear cover plate.



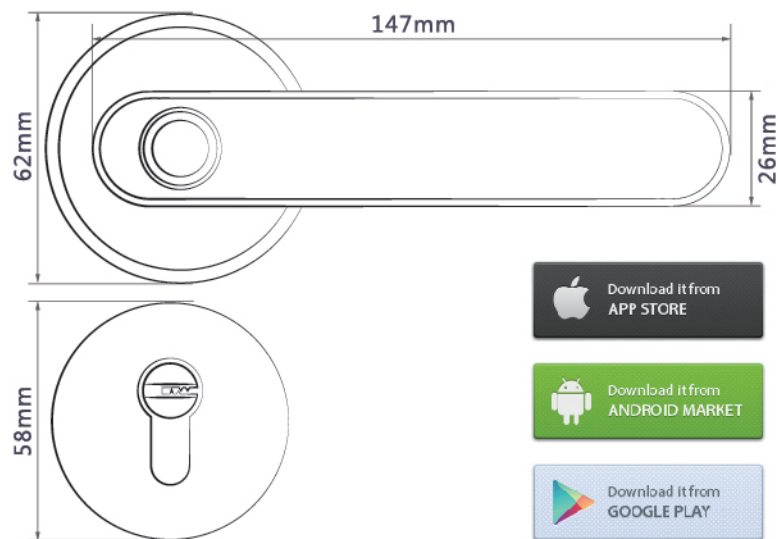
Align the square steel bar, tighten it with long screws, and fix the rear handle.



Note: when connecting the power line, the red mark on the terminal block is inserted in the same direction as the port red mark.



After installation, check the door opening.



How to open the door : APP, Fingerprint, Password, Key

Number of fingerprints : 100pcs

Number of passwords : APP sends password (Unlimited)
Custom password(150 Groups)

Product material : Zinc alloy lock body, Tempered glass touch screen

Power Supply : Four alkaline batteries

Applicable lock body : Single tongue lock body
Double tongue lock body (standard)

Passage Mode : Door lock status, easy to switch

Low battery reminder : Low battery indicator, red light flashing reminder,
low voltage reminder

Patented design : Independent design, industrial products made into handicrafts.

Product color : Black, brushed nickel, gold; support color customization

APP Application Download

The software (iOS version) can be downloaded from the APP store, and the Android version can be downloaded from the application store of Google play.



APP Store



Google Play

User Registration And Login

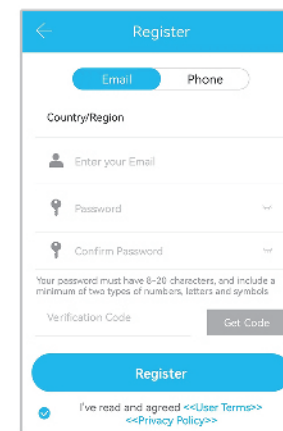
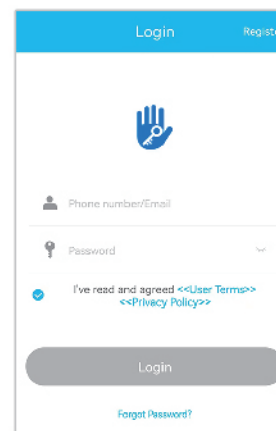
User registration:

On the login page, click "Register" in the upper right corner, enter your mobile phone number or email address, set a password and click Register.

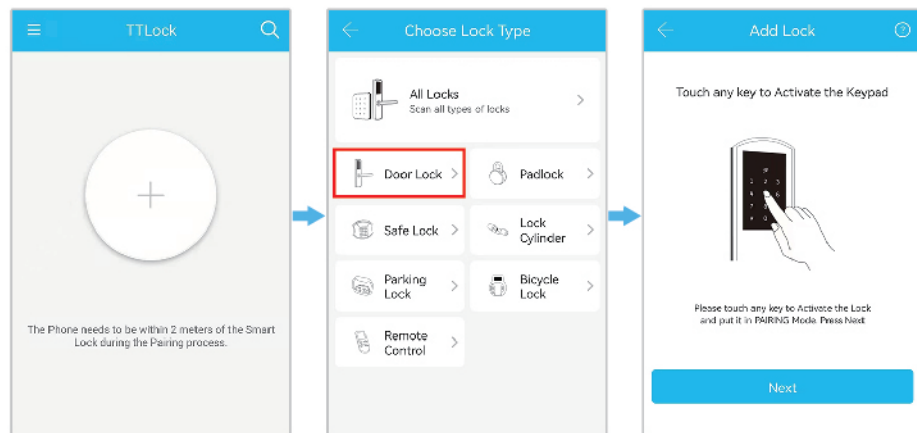
1. User can use phone number or email for registration which supported 159 countries.
2. Verification code will send to phone or email.
3. When the registration is successful, it will jump to home page.

User login:

On the login page, enter the account and password, and click "Login"



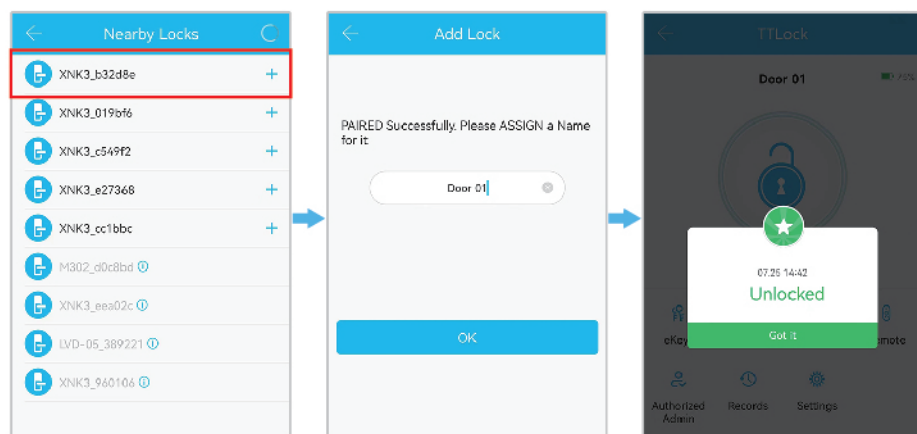
Add Door Lock Device



Add a Lock

Select **Door Lock**

Light Up Keypad

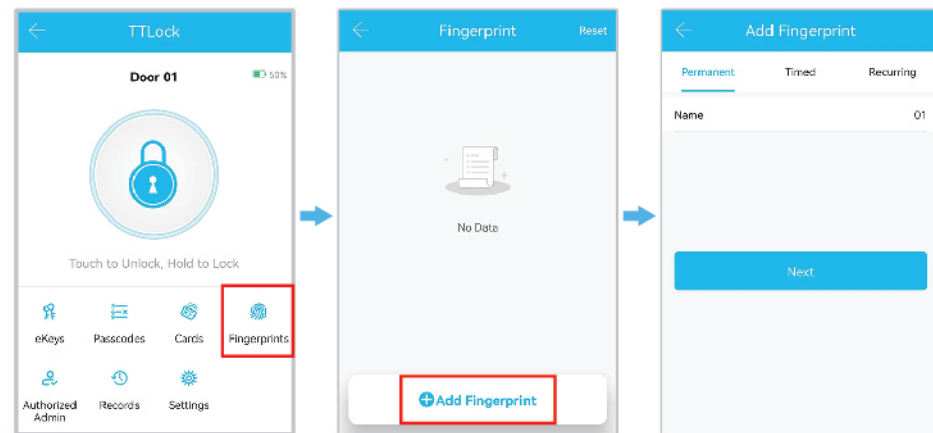


Select Lock

Enter Name

Operation complete

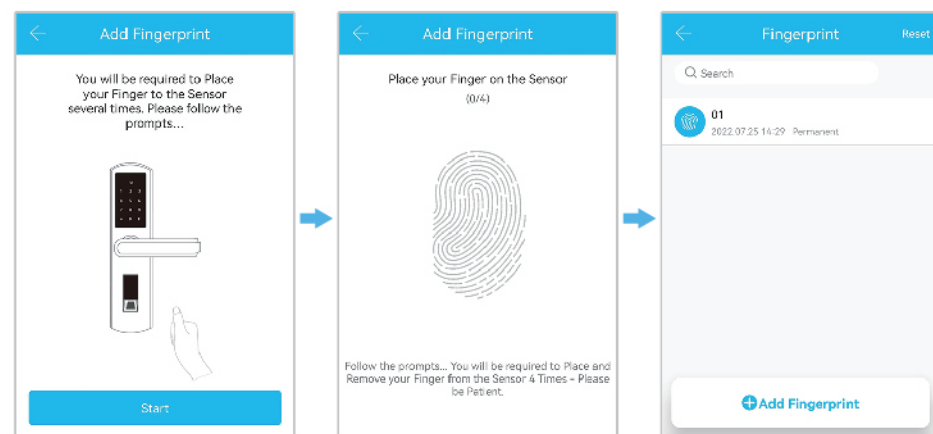
Set Up Fingerprint Unlock



Select on the main page **Fingerprints**

Click **Add Fingerprint**

According to the customer's door opening needs
Select fingerprint type

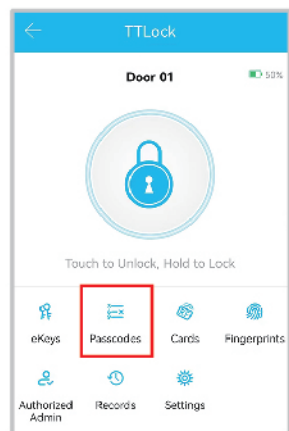


Bring your phone close to the door lock device click **Start**

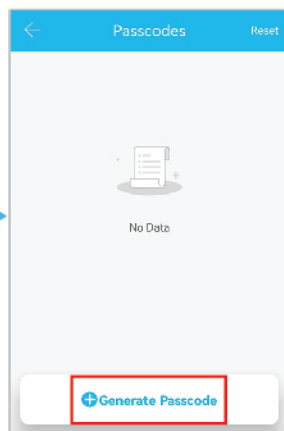
Follow the prompts to collect fingerprints

Fingerprint collection completed

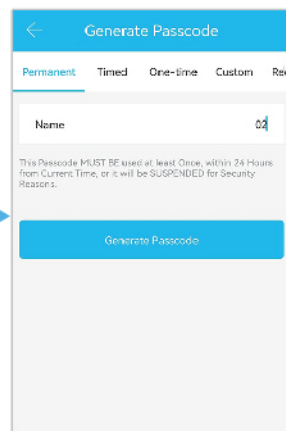
Set Password To Unlock



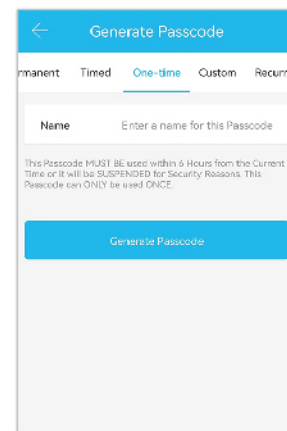
Select on the main page
Passcodes



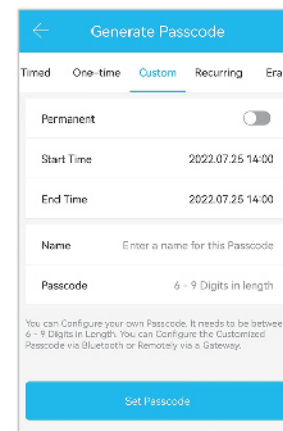
Select **Generate Passcode**



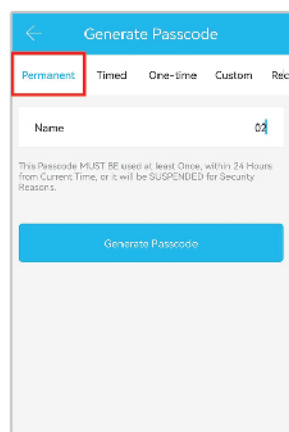
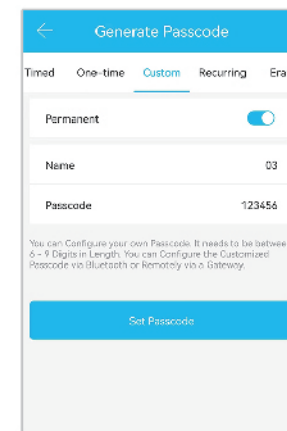
Select the password type
according to the use
requirements of the door lock



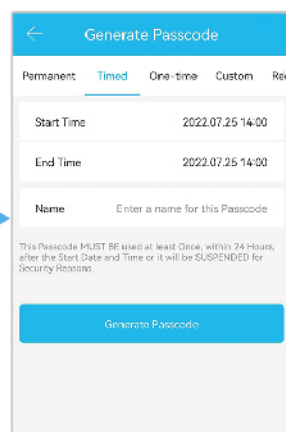
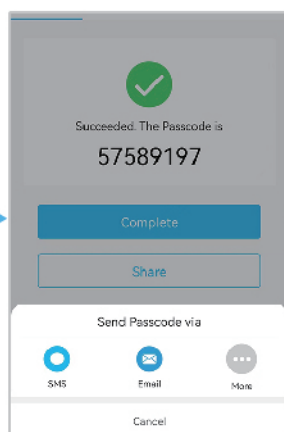
Get **One-time** password
1. Select **One-time**
2. Name the password
3. Click **Generate Passcode**



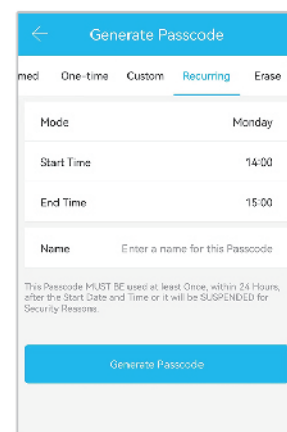
Get **Custom** password
1. Select **Custom**
2. Set Start Time or End Time or enable **permanent** option
3. Name the password
4. Set a 6-digit password
5. Click **Generate Passcode**



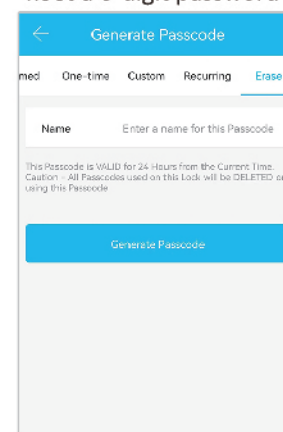
Get **Permanent** password
1. Select **Permanent**
2. Name the password
3. Click **Generate Passcode**
4. Click **finish or share** to send password



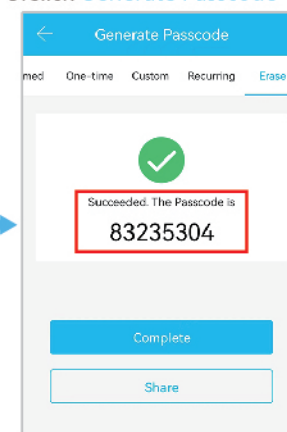
Get **Timed** password
1. Select **Timed**
2. Set Start Time or End Time
3. Name the password
4. Click **Generate Passcode**

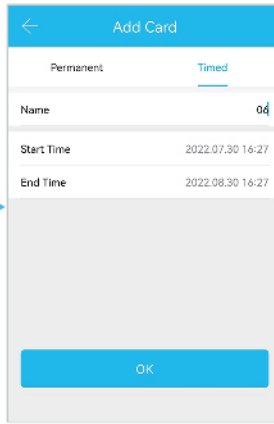
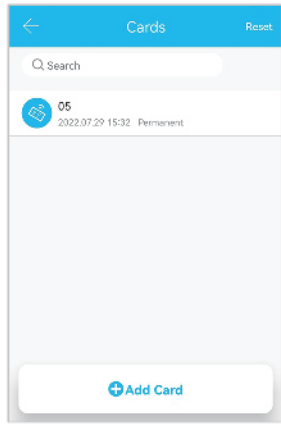


Get **Recurring** password
1. Select **Recurring**
2. Set repeat mode
3. Set Start Time or End Time
4. Name the password
5. Click **Generate Passcode**



Erase password
1. Select **Erase**
2. Enter the password on the door lock
device and **clear all passwords**





Set to add IC card

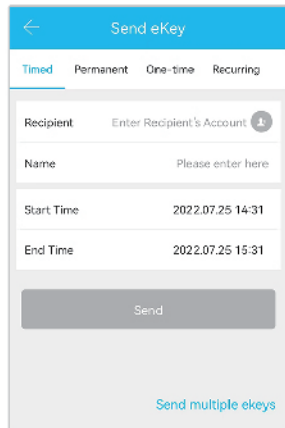
1. Select on the main page [Cards](#)
2. Click [Add Card](#)
3. Choose [Permanent](#) or [time](#)
4. Name the password
5. Set the effective expiration time
6. Click [OK](#)
(When adding, the card needs to be close to the card reading area of the lock)



Add a remote

1. Select on the main page [Remote](#)
2. Click to add remote
3. Select remote control type Select [Permanent](#), [Timed](#), [Recurring](#)
4. Name the remote and click Next
5. When the light flashes, click Next
6. Linking device
7. Add finished

Password sharing



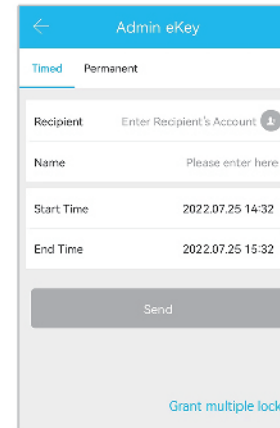
1. Select on the main page [eKey](#)
2. Select the type of password to share
3. Choose who to send
4. Click [Send](#)

[Timed](#) : The validity period can be set, the shortest is 1 hour and the longest is 3 years. If the validity period is less than one year, the time is accurate to the hour; if the validity period exceeds one year, the time is accurate to the month. The password must be used within 24 hours after it takes effect, otherwise it will automatically expire.

[Permanent](#) : Set a password that will always be used from now on. The password must be used within 24 hours after it takes effect, otherwise it will automatically expire.

[One-time](#) : Can only be used once and is valid for 1 hour.

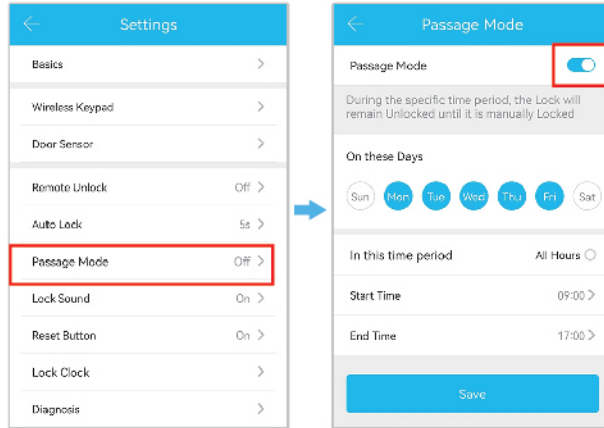
[Recurring](#) : It can be used repeatedly within the specified time interval, and types such as daily cycle, weekday cycle, and weekend cycle can be set.



Authorized Admin

1. Select on the main page [Authorized Admin](#)
2. Click Add Authorized Administrator
3. Select administrator type [Timed](#), [Permanent](#)
4. Fill in the account number and name of the other party
5. Set Start Time or End Time
6. Click [Send](#)

Passage Mode

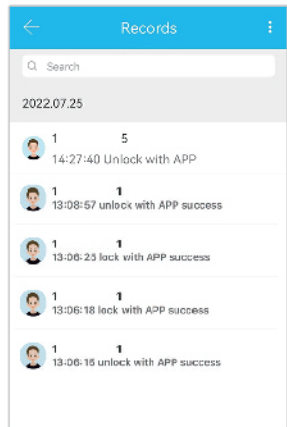


Settings on the APP passage mode

1. Select on the main page [Settings](#)
2. Choose [Passage Mode](#)
3. Open [Passage Mode](#)
4. Set opening hours
5. Click [Save](#)

Turn on channel mode by fingerprint

Open the lock by fingerprint (this fingerprint must input at lock), press the digit #123#, then the passage mode is on, freely to in and out. How to off this passage mode, just scan the fingerprint again, then it will be locked.

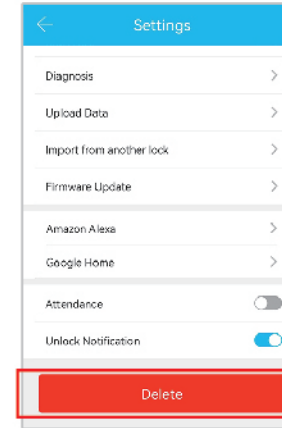


Open door record query

Select on the main page [Records](#)

It is also possible to search the door opening records of a single user.

Restore Factory Settings



1. Delete the device at TT lock app, after click the delete, it need fill your register password and also press # at the panel of lock, then app will show deleted successfully.
2. Press the back panel setup button for 5 seconds to restore the factory settings.



How To Verify Correctly

Language support

Language types:

English, Simplified Chinese, Traditional Chinese, Spanish and other 23 languages.

How to Verify Fingerprint Correctly

Gently press your finger on the fingerprint recognition window, keep your finger flat on the center of the fingerprint collection window, do not slide your finger, and release your finger after successful verification.

How to Verify Password Correctly

After entering the correct password, press "#" to hear the prompt sound "di~". The number light on the password keypad lights up, and the password verification is successful. Press the handle to open the door.

Note: In the online state, to unlock the password, you need to press the "#" key to trigger the numeric keypad.